

Waste Disposal Handbook

Table of Contents

App Setup	1
Town Map (10 Collection Areas) Display	2
Waste Management Process	3,4
How to Sort and Dispose Trash and Recyclables (Bags, Putting Out for Collection)	5
For Those Moving or Moving Out	5
Subsidy Program for Kitchen Garbage Disposal Equipment	6
Bulky Waste Collection and Disposal Service (Nikoniko Collection)	6
Home-Generated Medical Waste	6
① Burnable waste	7
Disposal methods for waste wood, grass, fallen leaves, and soil	8
② Plastic waste (1) Plastic containers and packaging	9
(2) Other plastic	10
③ Non-burnable waste	11
④ PET plastic bottles, hazardous waste (Fluorescent tubes, batteries, cigarette lighters, rechargeable batteries)	12
⑤ Recyclables (1) Metals (2) Glass bottles / jars	13
(3) Waste paper (4) Clothing / shoes	14
Recycling Miscellaneous Paper	15
Recycling Electric Home Appliances	16
Recycling personal computers, motorcycles, and frying oil	17
Disposal of Items Not Collected by the Municipality (Items That Must Not Be Disposed of with Other Trash/Recycling)	18
Businesses Where You Can Dispose of Items Not Collected by the Municipality	19
Contractors Licensed in General Disposal Management	20
Sorting/Classification Guide and Disposal Tips	21-30

Collection Dates

*** Waste collection services are provided on national holidays**

Collection dates vary by area.

Please refer to the **Household Garbage Collection Calendar** (published separately).

The Household Garbage Collection Calendar is available in seven languages in addition to Japanese (English, Portuguese, Chinese, Spanish, Korean, Thai, and Vietnamese).

【日本語】

「長泉町ごみ分別アプリ」は

令和7年3月31日でサービスを終了し、現在のご利用いただけません。

現在は「長泉町公式 LINE」にて、ゴミの分別や収集日などをお知らせしています。

(登録の方法) LINE で「長泉町」を検索 → 友だち追加 または下記 QR コードからアクセスできます。

【English】

The “Nagaizumi Town Waste Sorting App” service ended on March 31, 2025, and is no longer available.

Currently, waste sorting, collection days, and other information are provided through the “Nagaizumi Town Official LINE.”

(How to Register) Search for “Nagaizumi Town” on LINE → Add as a friend Or access it using the QR code below.

【Chinese】

“长泉町垃圾分类应用程序”已于 2025 年 3 月 31 日终止服务，目前已无法使用。

现在通过“长泉町官方 LINE”提供垃圾分类、收集日等信息。

(注册方法)在 LINE 上搜索“长泉町” → 添加为好友 或通过下方二维码访问。

【Korean】

‘나가이즈미마치 쓰레기 분리수거 앱’은 2025 년 3 월 31 일부로 서비스가 종료되었으며, 현재 이용하실 수 없습니다.

현재는 ‘나가이즈미마치 공식 LINE’을 통해 쓰레기 분리수거 및 수거일 등의 정보를 안내하고 있습니다.

(등록 방법)LINE 에서 ‘나가이즈미마치’를 검색 → 친구 추가 또는 아래 QR 코드로 접속 가능합니다.

【Vietnamese】

Ứng dụng “Phân loại rác Thị trấn Nagaizumi” đã kết thúc dịch vụ vào ngày 31 tháng 3 năm 2025 và hiện không còn sử dụng được nữa.

Hiện tại, thông tin về phân loại rác, ngày thu gom, ... được cung cấp qua “LINE chính thức của Thị trấn Nagaizumi.”

(Cách đăng ký) Tìm kiếm “Nagaizumi Town” trên LINE → Thêm bạn bè Hoặc truy cập bằng mã QR bên dưới.

【Espanol】

La aplicación “Nagaizumi Town Waste Sorting” finalizó su servicio el 31 de marzo de 2025 y ya no está disponible.

Actualmente, la información sobre la separación de residuos, los días de recolección, etc., se proporciona a través del “LINE oficial de la ciudad de Nagaizumi.”

(Cómo registrarse) Busca “Nagaizumi Town” en LINE → Añadir como amigo O accede mediante el código QR que aparece a continuación.

【Portuguese】

O aplicativo “Classificação de Lixo da Cidade de Nagaizumi” encerrou seu serviço em 31 de março de 2025 e não está mais disponível.

Atualmente, informações sobre a separação de lixo, dias de coleta, etc., são fornecidas pelo “LINE oficial da Cidade de Nagaizumi.”

(Como se registrar)

Pesquise por “Nagaizumi Town” no LINE → Adicione como amigo Ou acesse através do código QR abaixo.

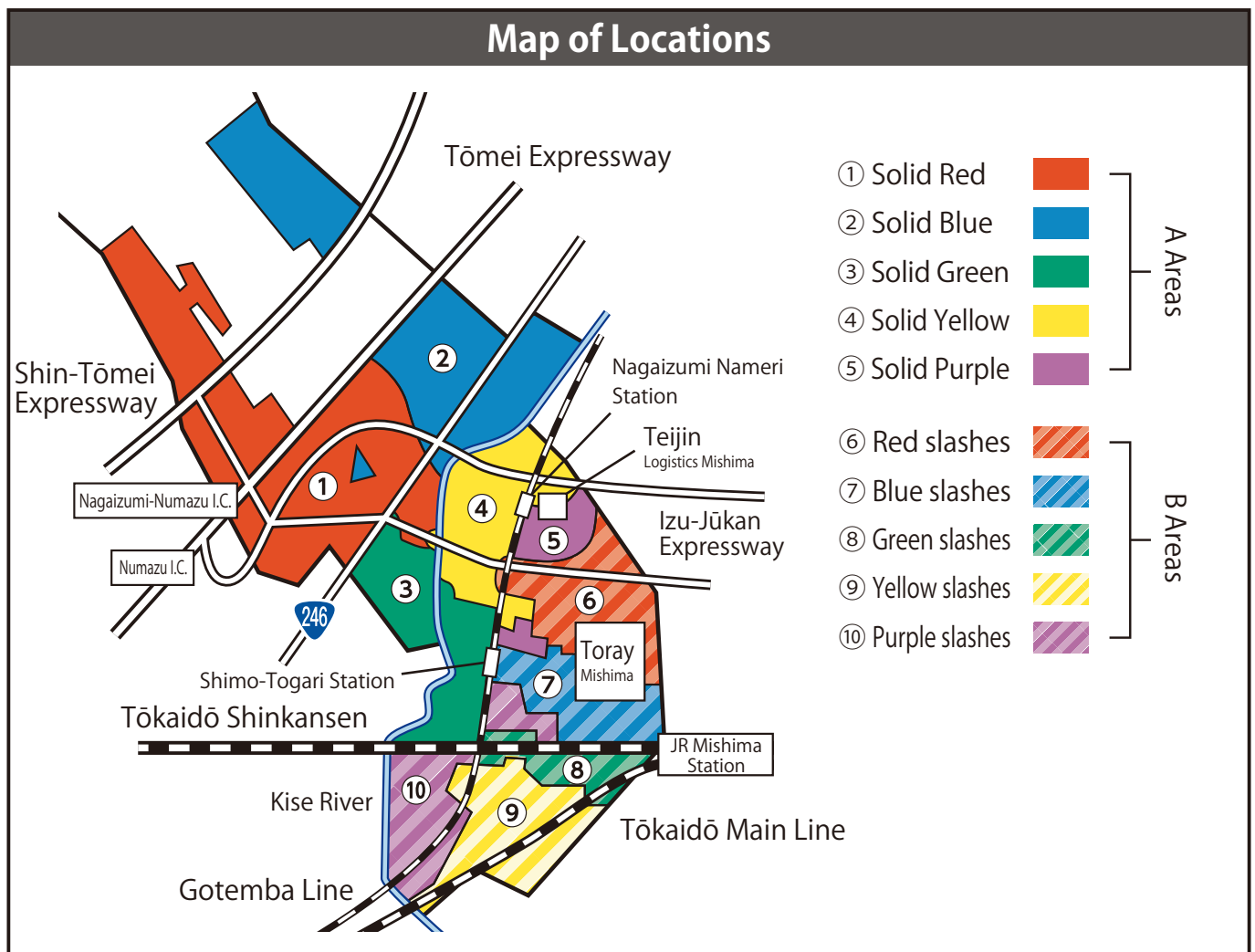


担当：長泉町くらし環境課

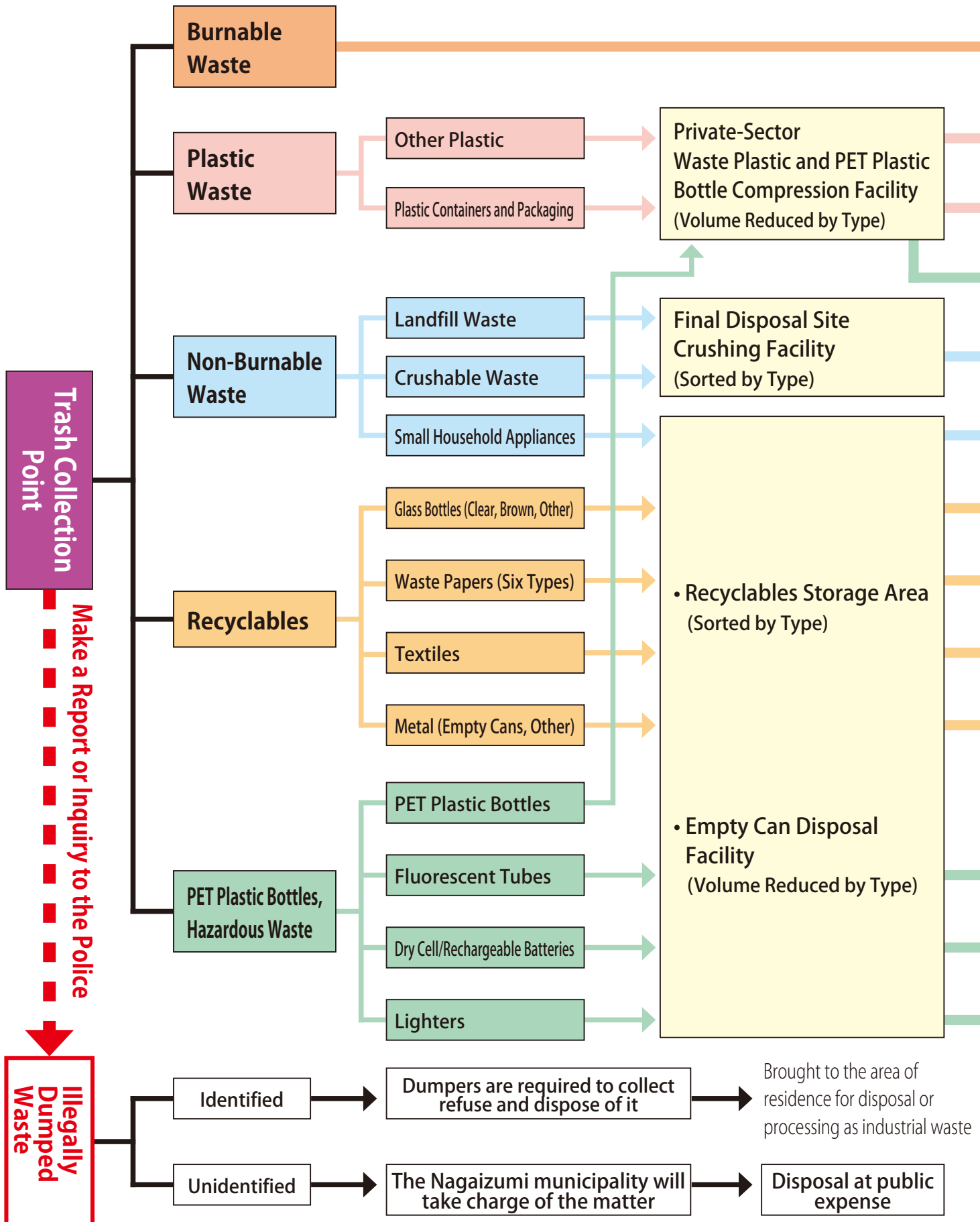
電話：055－989－5514

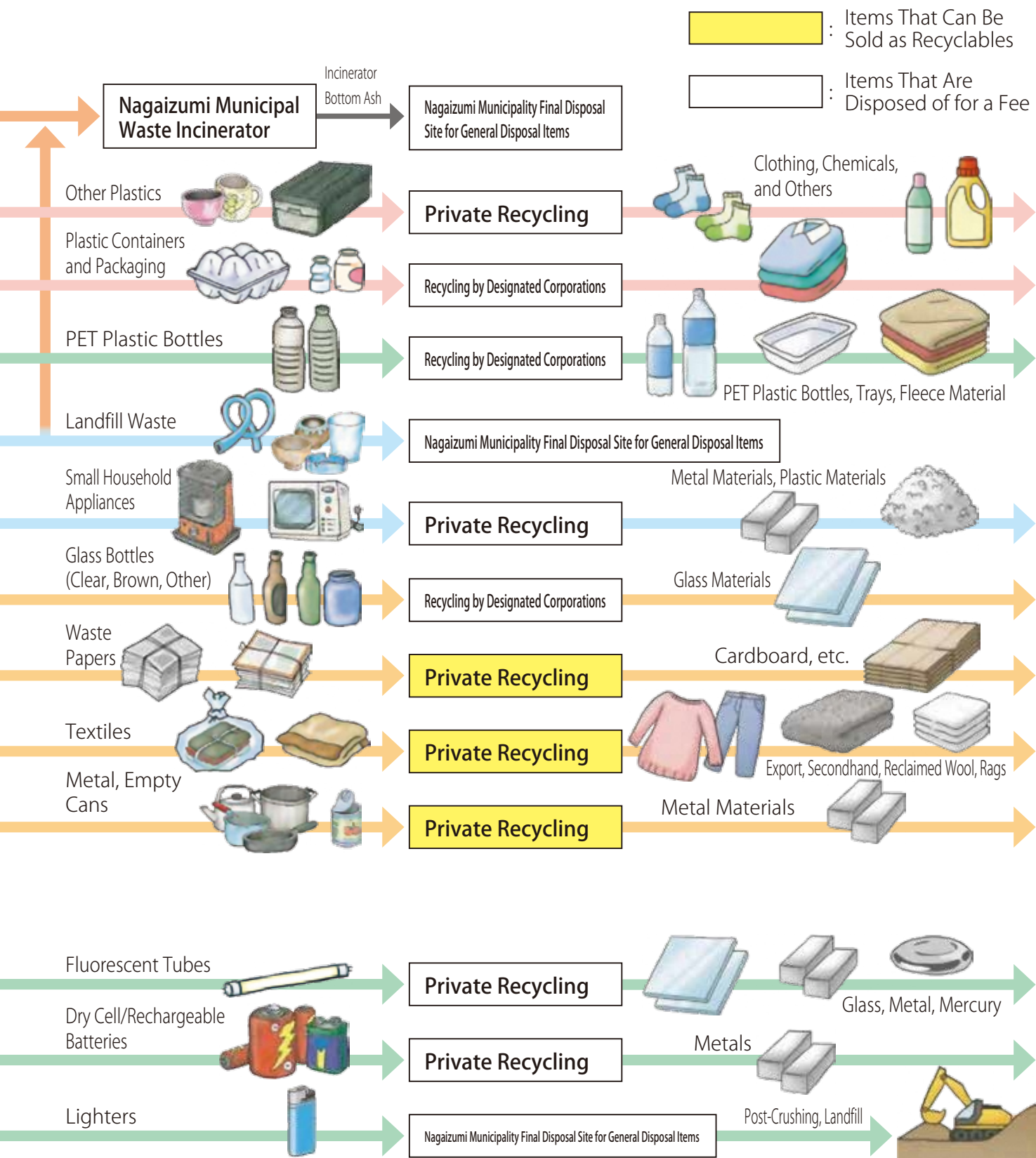
Ten Areas of Municipal Garbage Trucks

Areas	District name					
①	Moto-Nagakubo	Kami-Nagakubo	Shimo-Nagakubo	Yatai Residences		A Areas
②	Yato	Hachibudaira	Surugadaira	Minami-Isshiki	Tōbe-Minami-Isshiki	
③	Ikeda	Ojiri	Ayutsubo	Ojiri Residences	Charmant	
	National Institute of Technology, Numazu College	Honjuku (north of shinkansen railway)				
④	Nameri	Ogiso	Shin-Yachō-Kami			
⑤	Kami-Togari	Angel	Sōgahara	Shin-Yachō-Naka	Shin-Yachō-Shimo	B Areas
⑥	Naka-Togari-Nishi	Naka-Togari-Higashi	Chalier Naka-Togari			
⑦	Eki-Kami	Eki-Naka	Eki-Shimo	Nishi	Hara	
	Higashi	Chalier-Minami	Chalier-Higashi			
⑧	Sanganya	Sugihara	Takada	Harabun	Angel Nishi	
	Glanz					
⑨	Takehara	Charmant Takehara				
⑩	Susukihara-Kami	Susukihara-Shimo	Honjuku (south of shinkansen railway)			



Waste Management Process





Waste Incineration Plant



Stockyard for Recyclable Garbage



Final Disposal Site


How to Sort and Dispose of Trash and Recyclables

Disposing

Please place your trash in the designated bags, fill in the name of your ward of residence, your block, and your name, and take your trash to your designated trash collection point by 8:00 AM on collection day.

- * Upkeep of trash collection points is the responsibility of residents of the district in which it is in use. Check your district's rules and dispose of waste at the designated collection point.
- * Waste must be disposed of in the municipality where it is generated, so please handle your trash accordingly.

Garbage bags

	Town designated bags (45 L, 30 L 20 L, 10 L)	Plastic bags (Transparent or semitransparent)
Burnable waste	○	× (Including *1 below)
Plastic	○	○
Non-burnable waste	○	○

*1 When using garbage bags from other municipalities, be sure to cross out the city or town name with a double line. Write "Nagaizumi Town" on the bag and dispose of it as a category other than burnable waste. Black plastic or other bags in which the content cannot be verified will not be collected.

For Those Moving to Town or Moving Out

[Using Trash Collection Point]

- For new houses and condominiums
Please inquire with a district official or real estate agency.
- For rentals
Please inquire with a district official or the building's management company.

When Bringing Trash Directly to the Waste Incineration Plant

- **Items are received at the waste incineration plant.**
* Waste Incineration Plant: 055-986-8393 / Department of Living Environment: 055-989-5514
- **Have a driver's license or similar document as proof of town residency ready.**
* The facility cannot accept trash from anyone other than town residents.
- Items are accepted from 8:30 AM until noon, and from 1:00 PM until 4:30 PM.
* Exception: Bulky waste, including mattresses and beds that the town does not collect from trash collection point, can be disposed of from 8:30 AM to 11:30 AM and from 1:00 PM to 4:00 PM.
- At reception, you will be requested to take items deemed acceptable directly to the recycling depository or final disposal site.
- Trash may be brought in from Monday to Friday, excluding holidays.
* Bulky waste is accepted on the first Sunday of the month with an appointment. (Please see the website or related paper documents for details)
- There may be cases where commercial waste cannot be accepted as industrial waste.
- Items that are not in line with the sorting rules cannot be accepted.
- A special permit is required to transport someone else's trash. Transporting others' trash without one is a violation of the Act on Waste Management and Public Cleaning and may result in penalties.
* Please note that even if your intentions are good, doing this is still a violation of the law.
- Trash cannot be accepted if your address or place of generation has been falsified.

Take Advantage of the Subsidy for Installation of Food Waste Processing Equipment, Etc.

Households and businesses often include their food waste with burnable garbage.

In order to reduce and recycle food waste, the town offers subsidies that cover a portion of the cost towards the purchase of food waste disposal equipment.

Using a food waste disposal equipment not only helps prevent global warming by reducing the amount of waste incinerated, but also reduces odors, insects, and crow damage at trash collection point.

So take advantage of this subsidy system and help us work to reduce food waste.

Overview of Subsidy Program

Amount	Up to half the purchase cost, with a limit of 30,000 yen for mechanical food waste disposals and 4,000 yen for food waste compost bins.
Eligibility	Residents and owners of businesses in Nagaizumi Town, who are capable of disposing of composted food waste.
Number of units covered	1 mechanical food waste disposal per family, which can generally be used for 6+ years 2 food waste compost bins per family, which can generally be used for 3+ years
Application procedure	① Obtain a receipt for your purchase of the relevant item(s). ② Please submit the subsidy application form and other required documents to the town (Department of Living Environment). * You can download the required documents from the town website or pick them up from the counter for the Department of Living Environment at the town hall.
Note	Applications must be made within 30 days of the date of purchase or date of payment (whichever is the later date) and by March 10 of the fiscal year in which the purchase was made, whichever comes first. * Subsidies are available within the amount budgeted by the town.

Take Advantage of the Bulky Waste Collection And Disposal Service (Nikoniko Collection).

The town offers a collection and disposal service for bulky waste, including furniture and other items too large to be placed at trash collection point. The service is for individuals who meet certain criteria, including households consisting only of seniors aged 70 and over who do not own a car, and individuals with disabilities who are unable to dispose of such items on their own. The purpose of the program is to avoid dangers such as furniture tipping over during disasters.

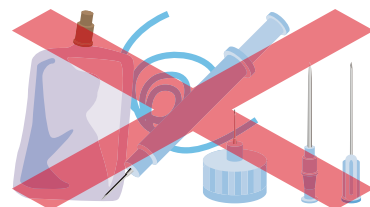
* Please contact the Department of Living Environment for details (055-989-5514).

Disposal of Home Medical Care Waste

As a precaution against the risk of worker injury or infection during collection and sorting, the municipality does not collect medical waste generated from home medical care (such as needles used for insulin or intravenous drips). This type of waste is classified as non-collectible trash (public disposal is prohibited). Please bring it directly to the medical facility where you are receiving treatment.

You can also make use of Nagaizumi Usagi Pharmacy (283-1 Minami-Ishiki), which will accept such items free of charge.

* The service is available for those receiving medical treatment from other organizations as well.



Remarks Section

Burnable waste is burned at the waste incineration plant and the ash is landfilled. By eliminating paper and clothing waste, as well as food loss from leftovers and unused products, we can contribute to the effective use of resources and help achieve sustainable development goals.

Keywords: "reasonable portion size," "food loss reduction," and "sustainable development goals."

How to Sort

- ① Food waste, fallen leaves, garden cuttings from trees and other plants (up to 5 cm in diameter), disposable diapers, and other burnable items.
- ② Dispose of waste from disposable diapers and pet droppings in the toilet first.
- ③ Remove soil from the roots of grass, flowers, moss, and other vegetation before putting it in the trash.
- ④ When wooden furniture can be taken apart, disassemble and separate by material.
- ⑤ Remove metal from disassembled furniture and dispose of it as recyclables.

How to Dispose

- ① Do not put multiple smaller bags inside your trash bag. Do not wrap trash in the newspaper or other.
- ② You can put out up to five bags of trash and five bundles, at a time. If you have more than this, you must bring it to the waste incineration plant yourself.
- ③ Cut tree branches, bamboo, cabinets, and other wooden items to a maximum length of 50 cm and tie them in a bundle with hemp cord, rope, or similar material before putting them out. (Split bamboo lengthwise if over 3 cm in diameter)
- ④ Logs or branch cuttings can be a maximum of 5 cm thick. Please split anything thicker lengthwise.
- ⑤ Please bag roses and any other thorny branches before putting them out. Please label the bag "トゲあり" (thorns).
- ⑥ Break items with sharp ends, such as skewers and toothpicks, in two before putting them out.
- ⑦ Used deep-frying oil that cannot bring to the waste incineration plant yourself should be solidified with an oil coagulant or soaked up with paper towels or a similar material. (Do not use advertising flyers, newspapers, etc. as they are recyclables.)

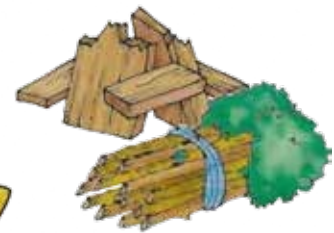
Kitchen garbage



Seashells



Leaves, etc.

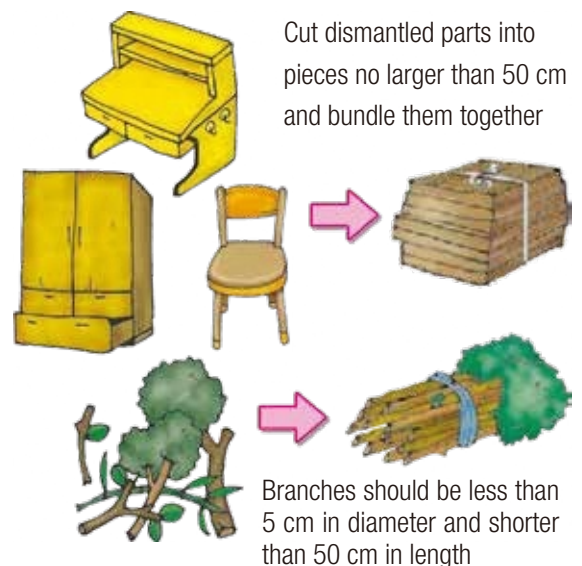
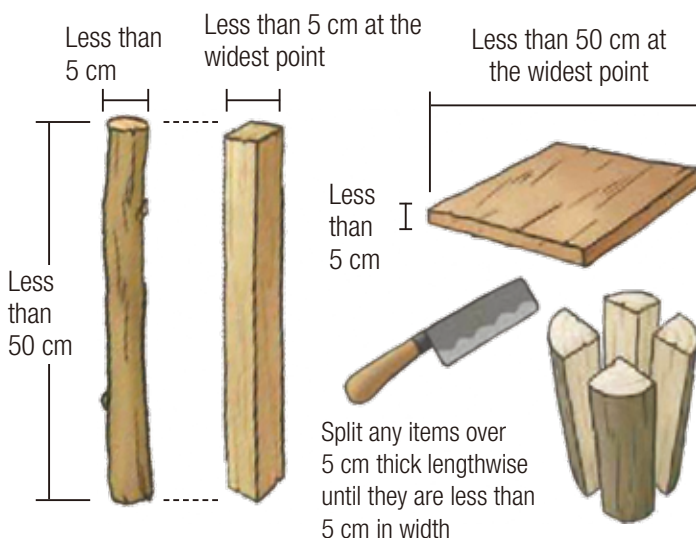
Wood scraps, pruned branches
(Up to 50 cm in length)

Disposable diapers, etc.



Pet droppings

*** Miscellaneous paper is paper waste and must be disposed of with recyclables.**

Items That Can Be Put Out at the Trash Collection Point

Cut dismantled parts into pieces no larger than 50 cm and bundle them together

Branches should be less than 5 cm in diameter and shorter than 50 cm in length

Disposal of Waste Wood, Fallen Leaves, and Soil

Pruned branches “Bring thick branches (diameter of over 5 cm) from garden cuttings directly to a waste incineration plant.”

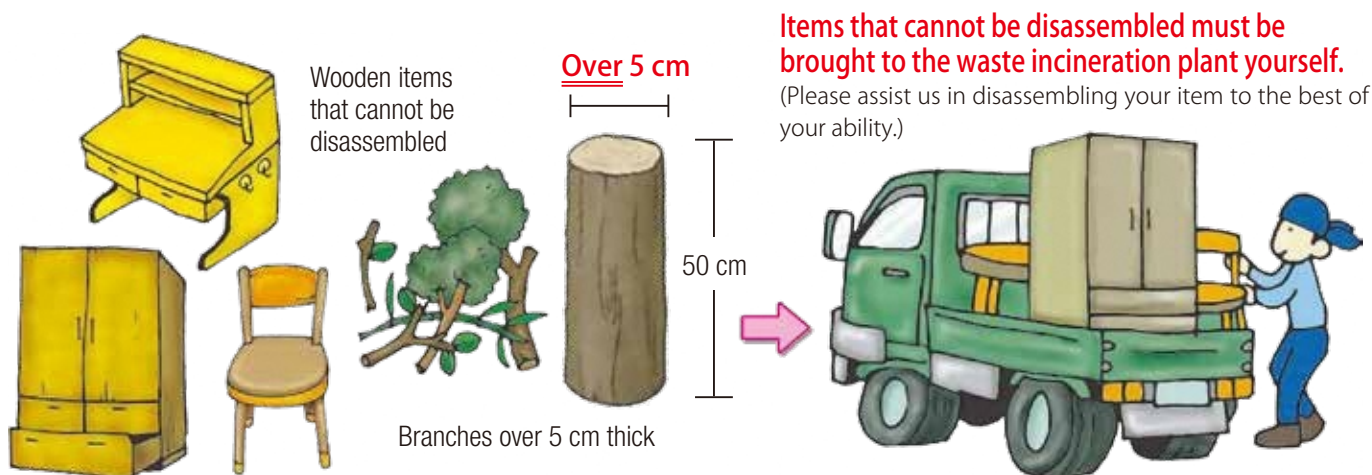
Regarding grass and the leaves on pruned branches, please help us reduce the amount of burnable waste by exposing them to sunlight to dry them out (make them lighter) whenever possible before disposal.

Please bring thick branches and similar items to the waste incineration plant. Please note that they will only be accepted if all soil has been removed, including on the roots. (Items with soil on them will not be accepted.)

Pruned branches must be a maximum of 50 cm in length, even when bringing them to the waste incineration plant.

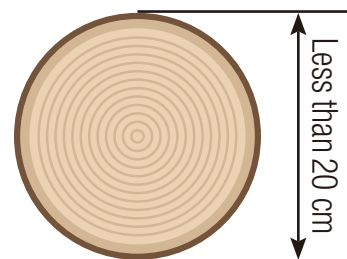
Remarks Section It is very common for thick branches to burn only partially. Depending on the species of tree and how the branches are split, even at a diameter of 5–10 cm, they may only partially burn. In the worst cases, they could jam in the machinery, necessitating an emergency stoppage of the facility. We therefore ask for everyone’s cooperation when throwing these away.

Items That Cannot Be Put Out at the Trash Collection Point



When the diameter of logs, exceeds 20 cm

- Logs with diameters of less than 20 cm can be accepted.
 - * Less than 50 cm in length
- Please take logs with diameters exceeding 20 cm to a specialist (this service is for a fee).
- * Within Nagaizumi, please address inquiries to Seki Transys Corporation.



Soil Treatment and Disposal

- We do not collect soil as it is not a waste product.
 - Please address inquiries regarding soil and stone for planters and plant pots to Marutama Transportation Co., Ltd. (Sekikengyō Co., Ltd.)
(Address: 394-16 Minami-Ishiki; TEL: 986-5317)

Please Do Not Use Collection Contractors Who Are “Unlicensed” for Waste Management

Unlicensed waste collection contractors are those who are not licensed for general disposal of household waste by Nagaizumi Town, or are not commissioned by the town and are engaging in illegal waste collection. Using such services risks the inability to confirm proper handling which compliant with the law.

“Unlicensed” waste collection contractors can sometimes be found engaging in the following:



Advertising around town using loudspeakers



Collecting items from vacant lots




Distributing leaflets



Advertising online

2 Plastic Waste《Every Wednesday in All Districts》

(1) Plastic containers and packaging

How to Sort	<ol style="list-style-type: none"> ① Plastic items used as containers and packaging for food and other products ② Plastic bags and wrappers; bottles and cups; tubes and lids; trays and packages; packaging and cushioning material (Styrofoam, etc.) ③ Items with the identification mark for plastic containers and packaging  ④ Items with the plastic symbol, even if manufactured overseas ⑤ Aluminum-coated bags for potato chips or vacuum-packed foods; plastic blister packs for pills; tubes for toothpaste, mayonnaise, makeup, etc.; lids and caps ⑥ Bags such as plastic shopping bags, candy bags, and plastic bags; plastic wrappers for snacks and prepared foods ⑦ Bottles for such as condiments like sauces, detergent, and shampoo; bento (lunch) trays; cup noodle containers
How to Dispose	<ol style="list-style-type: none"> ① Write your ward, block, and name on a town-designated garbage bag and tie it at the top to close. ② All plastic containers and packaging, such as bags, trays, cups, tubes, etc., regardless of type, can be put into one bag. * Do not put several bags inside one bag (do not double or triple bag). * Do not take out in small bags. Use bags of at least 10 L. (To avoid scattering.) ③ Thoroughly rinse or wipe containers to remove all food residue, etc. ④ Empty, thoroughly rinse, and remove the cap of containers for mayonnaise, ketchup, etc. ⑤ Empty, thoroughly rinse, and remove the cap of tubes for toothpaste, condiments, etc. ⑥ Empty, thoroughly rinse, and remove the cap of bottles for shampoo, etc. ⑦ Stickers that cannot be removed may be left on.

Remarks Section Microplastics problem

Start disposing of different plastic types appropriately! Do not take that plastic bag if you do not need it!

Plastic Waste

Plastic bags and shopping bags; wrapping film and plastic wraps (cling film); bottles; cups and containers; tubes; lids and caps; trays and packages; Styrofoam, packaging material, cushioning material, PET plastic bottle caps



When Sorting Plastic Waste

① **Remove caps** from bottles, etc.

* **Make sure to empty them.**



② **Sort the content** and dispose of it accordingly.



* Please refer to pages 21 - 30 for a list of items in order of the alphabetical order.

(2) Other plastic waste

How to Sort	<p>① Plastic waste excluding plastic containers and packaging belongs to this category</p> <p>② Plastic items used mainly as tools, such as polyethylene buckets, wash basins, garment cases, etc.</p> <p>③ Metal parts and batteries such as screws and nuts should be removed from plastic toys, riding toys, etc.</p> <p>* Items made of both plastic and metal parts that cannot be dismantled should be disposed of as landfill waste.</p> <p>④ Cases for CDs, DVDs, videotapes, etc.</p> <p>⑤ Plastic and rubber hoses are landfill waste</p>
How to Dispose	<p>① Write your ward, block, and name on a town-designated garbage bag and tie it at the top to close.</p> <p>② Small items should be taken out together in the same bag. Use a bag of at least 10 L when possible.</p> <p>③ Write your name on clothing containers and similar items and take them out as is.</p> <p>④ Empty planters, plastic flower pots, etc. of soil and rinse with water.</p> <p>⑤ Remove dust and other soiling with a damp cloth.</p> <p>⑥ Rinse and remove the lid from plastic containers that contain kerosene or similar products before taking them out.</p> <p>⑦ Disassemble plastic toys and other items that can be disassembled whenever possible.</p> <p>⑧ When disposing of cushions with bead filling, recycle the outer cover with "clothing" and put the inner cover with contents inside in a bag.</p>



① Disposing of CDs and other media



② Toys * Dismantle if possible and sort by part.



* Please refer to pages 21-30 for a list of items in order of the alphabetical order.

3 Non-burnable Waste 《Alternate Weeks, Twice a Month》

(1) Small household appliances

How to Sort	<ol style="list-style-type: none"> ① Dispose of all appliances with a power plug, including battery-powered ones, as small appliance waste. ② Remove dry cell batteries and rechargeable batteries. If the batteries are difficult to remove, dispose of the appliance as is. ③ Insulate the removed batteries by applying electrical tape to the electrodes. Dispose of them with PET plastic bottles / hazardous waste. ④ Dispose of microwave ovens and heaters with fans as small appliance waste. ⑤ Make sure to remove kerosene from heaters with fans before disposing of them. ⑥ Directly take major appliances that do not conform to the Home Appliances Recycling Law to the waste incineration plant. (Massage chairs, etc.) ⑦ Return leased items such as water dispensers to the relevant company. ⑧ Dispose of LED lights as small home appliances. 	
How to Dispose	<ol style="list-style-type: none"> ① Do not put small home appliances, crushable waste, and landfill waste in the same bag; dispose of them separately. ② Remove detachable items such as kerosene tanks from kerosene stoves and kerosene heaters with fans, and dispose of them following the rules of their respective categories. 	

(2) Crushable waste

How to Sort	<ol style="list-style-type: none"> ① Large bags such as suitcases and golf bags should be disposed of as crushable waste. * Empty any pockets. ② For futons, tie each mattress separately with a rope. Do not put any small items inside the folds. ③ Fold rugs and carpets to make them as compact as possible before disposing of them. 	
How to Dispose	<ol style="list-style-type: none"> ① Remove any metal fittings, and disassemble parts that are less than 50 cm if the item's height, width, or length is more than 50 cm. Directly take it to the waste incineration plant if it cannot be disassembled. ② Remove any plastic covers securing the item. ③ Put all small stuffed toys together in a bag before disposing of them. Make larger ones as compact as possible. ④ Remove any dry cell/recharge batteries or rechargeable batteries. 	<p>* Down quilts are recyclables</p>


(3) Landfill waste

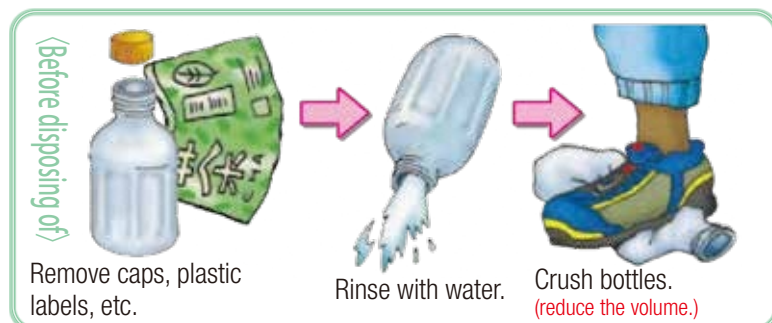
How to Sort	<ol style="list-style-type: none"> ① Request a professional company, such as Marutama Transportation or Sekikengyō Co., Ltd., to dispose of soil and stones. ② Dispose of heat-resistant glass, such as cloudy cosmetics containers and baby bottles, as landfill waste. ③ Aluminum foil is landfill waste. ④ Wash soil from plant pots. ⑤ Footwear should be disposed of as landfill waste if they are extremely dirty or if you only have one of a pair. (Otherwise, put them as recyclables) 	
How to Dispose	<ol style="list-style-type: none"> ① Dispose of glass items, such as fish tanks, without breaking them. ② For broken glass, etc., cover sharp portions with duct tape for protection and put them in a bag. ③ Put boots in a bag for disposal. Do not stuff them with garbage. ④ Roll up plastic hoses and gas pipes, and tie them with a rope before disposing of them. 	

4

PET Plastic Bottles / Hazardous Waste《Twice a Month》

(1) PET plastic bottles

How to Sort	<ol style="list-style-type: none"> ① Soft drink containers (tea, juice, water); containers for certain condiments (soy sauce, soy sauce products, mirin-type condiments, cooking vinegar, table vinegar, dressing-type condiments); alcoholic beverage containers (shochu, sake, whiskey, etc.) ② This category is limited to items marked with a special "PET1" identification mark. (Same for foreign products) ③ Remove caps, plastic labels, and advertising stickers. 
How to Dispose	<ol style="list-style-type: none"> ① Remove caps, plastic labels, and advertising stickers (paper and plastic), and as many of the paper labels on, for example, mirin bottles as possible. ② Empty of contents and rinse thoroughly. ③ In order to reduce their volume, <u>be sure to crush them</u> before placing them in the collection container. ④ Remove from bags when placed into the collection container. Be sure to only put the bottles in.

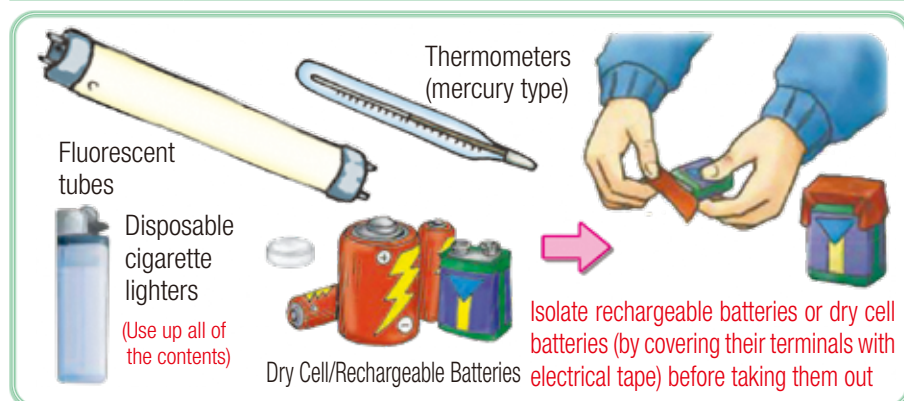


Remarks Section PET plastic bottles are being recycled to make fleece, food trays, new PET plastic bottles, and more.



(2) Hazardous waste (fluorescent tubes, dry cell batteries, disposable lighters, rechargeable batteries)

How to Sort	<ol style="list-style-type: none"> ① This covers used fluorescent tubes, dry cell batteries, disposable lighters, thermometers with mercury, and rechargeable batteries ② Put out mercury-free incandescent light bulbs, fluorescent lamps, and LED lights with non-burnable waste (landfill waste). ③ Use all of the fluid in disposable lighters before putting it out. (If you have not used all of the fluid, bring the lighter(s) directly to the waste incineration plant.) ④ If you cannot remove the rechargeable batteries from a small household appliance, put the item out for collection as is with non-burnable waste (small household appliances).
How to Dispose	<ol style="list-style-type: none"> ① Place fluorescent tubes and mercury-containing thermometers directly into the bins placed at trash collection point for the purpose. ② Insulate dry cell batteries and rechargeable batteries with electrical tape or a similar product before placing them in the prepared 18-liter drum. ③ Place disposable lighters as they are directly into the container for fluorescent lights. (Placing with dry batteries is a fire hazard) ④ Put broken fluorescent lights into a clear bag before placing them in the container. ⑤ If you have a broken mercury thermometer, put both thermometer and mercury into a sealed container before placing them into the collection container. <p>* You can use a PET plastic bottle with a lid to hold the thermometer/mercury, but it should be labeled "割れ体温計、水銀あり" (broken thermometer, with mercury).</p> <p>* As mercury is an <u>environmental pollutant</u>, please do not put it out with burnable waste or non-burnable waste.</p> <p>* Insulate rechargeable batteries or dry cell batteries taken from equipment (by covering their terminals with electrical tape or a similar product) and ensure that they will not be exposed before taking them out for collection.</p>




* Please refer to pages 21-30 for a list of items in order of the alphabetical order.

5 Recyclables 《Twice a Month》

(1) Metals (including empty cans)

Recycling (All materials are transformed into new products)

How to Sort	<ol style="list-style-type: none"> ① Anything made of metal and plastic that consists of more than half of metal should be disposed of as recyclables. * Excludes small household appliances (all appliances with a power plug, including battery-powered ones, are considered non-burnable waste (small household appliances)) ② Vinyl-coated steel products, such as laundry poles, should be shortened to less than 2 m. ③ Remove the umbrella cloths from umbrellas and dispose of the frame as recyclables (metals). The handles need not be removed. 	
How to Dispose	<ol style="list-style-type: none"> ① Place empty cans in the empty can collection box. There is a separate collection box for small metal items. ② Remove lids from large lidded cans before placing them in the box. Where possible, keep small nails, rivets, and similar items together when placing them in their box. ③ Be sure to use all content in spray cans, and place them in the empty can collection basket. Do not puncture them before disposal. If you cannot fully use all of the contents in a spray can, take it directly to the waste incineration plant yourself. ④ Make sure that all kerosene has been emptied from the main base and tank(s) of kerosene heaters and similar items before disposing. ⑤ Use up the contents of canned foods, rinse thoroughly, and dispose. 	

(2) Glass Bottles

Reusing, Recycling

How to Sort	<p>Bottles for beverages, food products, cosmetics, oral medicine, and pills belong to this category.</p> <ol style="list-style-type: none"> ① Cloudy cosmetic containers and glass sheets should be disposed of as non-burnable waste (landfill waste). ② Ceramics should be disposed of as non-burnable waste (landfill waste). ③ Remove plastic caps and dispose of them as plastic containers and packaging. ④ Remove detachable labels and plastics. ⑤ Items not collected: bottles containing pesticides, herbicides, etc., should be returned to the retailer where purchased. 	
How to Dispose	<ol style="list-style-type: none"> ① Sort bottles by color into three groups: transparent (colorless), brown, and others. Dispose of them in their respective bins. ② Broken bottles should be placed in bags (transparent bags if possible). ③ Bottles should be emptied and rinsed thoroughly. ④ Take out baby bottles and Pyrex glassware as landfill waste. <p>* Pyrex glass is often used for heat-resistant glass containers. Example: Glass measuring cups</p>	

Cosmetic bottles
(Non-cloudy bottles are recyclables)

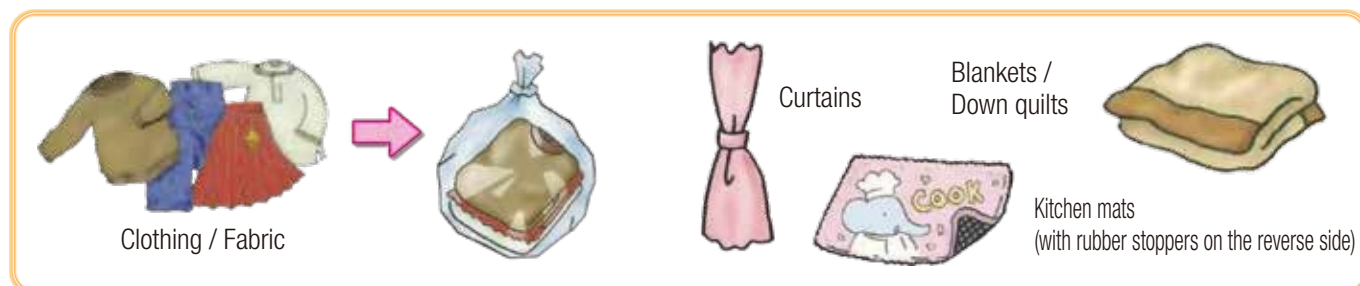
One-way bottles
("One-way bottles" refer to clear, brown, and other colored glass bottles that are collected, finely crushed, and reused as the raw material for glass products)

(3) Waste paper Recycling

How to Sort	① Waste paper is separated into six categories: newspaper, magazines, miscellaneous paper, cardboard, milk and other cartons, and shredded paper.				
How to Dispose	① Bundle by tying up the stack both horizontally and vertically using a string suitable for tying paper. ② Empty milk and other cartons, rinse, flatten as much as possible, and tie them into a bundle before taking them out. ③ Remove duct tape and packing tape from cardboard and put the tape out as burnable waste.				
Newspaper	Magazines	Miscellaneous papers	Cardboard	Shredded paper	Paper cartons for milk, juice, sake, etc.
					
* Newspaper insert flyers/ads should be bundled together with the newspaper.	* Paper boxes, wrapping paper, catalogs, copy paper, etc. can be bundled together.				* Rinse with water, cut open, dry, and bundle. * Cartons with coating inside are also acceptable.

(4) Clothing / Shoes Reusing, Recycling

Categories	Items to be disposed of as recyclables	Items to be disposed of as burnable waste non-burnable waste (crushable waste)
Clothing	Suits, sweat suits, neckties, socks, aprons, jackets, underpants and other undergarments, sweaters, kimonos, obis, yukatas, swimsuits, etc.	Burnable waste: clothing stained with paint, oil, etc., torn clothing, pantyhose, yarn, ripped underwear, socks with holes, etc.
Cloth	Towels, sheets, small kitchen mats (no larger than 70 cm x 100 cm), handkerchiefs, scarves	Burnable waste: strips of cloth (cloth scraps) and wiping cloths Crushable waste: rugs and carpets
Shoes	Sneakers, hiking shoes, business shoes (including leather shoes), boots, high heels, etc. <u>* Always dispose of as a pair</u>	Crushable waste: items that are extremely dirty, only one of a pair, beach sandals, geta clogs, zori sandals, setta sandals, shoes with broken soles, rain boots (adults/children), long work boots
Bags	Bags, backpacks, knapsacks, waist pouches, etc. Can be quilted, have fake fur, or have chain handles	Crushable waste: bags that are no longer usable, hard school backpacks, suitcases and other luggage with casters, pouches, wallets, drawstring sacks, etc.
Curtains Blankets	Curtains, blankets, cotton blankets, futon covers, pillowcases, sheets, winter sheets, down quilts	Crushable waste: items with stuffing such as futons, torn curtains, and soiled blankets
How to Dispose	Place it in a plastic bag when putting it out for pickup. * Wet fabrics cannot be reused. Do not place out for pickup when rain is expected. * Take out to the trash collection point and place the bag with its tied opening on the bottom.	



Remarks Section Please dispose of non-reusable items not listed above as burnable waste or crushable waste based on their size. Some of these include: ① items dirtied with mud, oil, paint, or another soiling to the extent that they cannot be washed, ② mattresses, comforters, floor cushions, pillows, and similar items, ③ lavatory seat covers, doormats, and bathmats, ④ slippers and dust cloths, ⑤ blankets and towels used for pets, ⑥ Kotatsu underlays and heated blankets, ⑦ plastic raincoats and umbrellas.

Recycling Miscellaneous Paper

Miscellaneous Paper Is a Precious Resource

Be sure to help  recycle miscellaneous paper

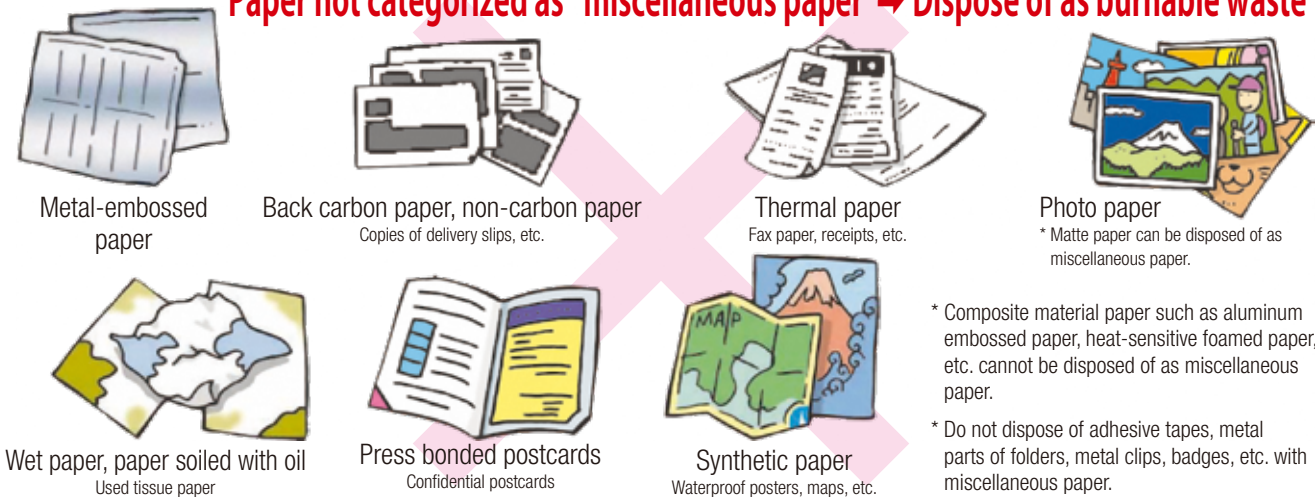
Nagaizumi Town collects miscellaneous paper as recyclables as part of its efforts to reduce burnable waste and to promote the effective utilization of resources. If we can avoid the incineration of miscellaneous paper and recycle it instead, we will greatly reduce the total amount of waste burned. This will lead to cutting down on incineration costs, prolonging the longevity of incineration facilities, and help prevent global warming by reducing the emission of carbon dioxide. Please join our efforts and dispose of miscellaneous paper as recyclables.

Papers that can be disposed of as miscellaneous paper Paper packaging and paper products with a 紙 mark



* Extremely dirty paper and vinyl-coated paper cannot be disposed of as miscellaneous paper. → Remove and dispose of burnable waste.

Paper not categorized as "miscellaneous paper" → Dispose of as burnable waste



* Composite material paper such as aluminum embossed paper, heat-sensitive foamed paper, etc. cannot be disposed of as miscellaneous paper.

* Do not dispose of adhesive tapes, metal parts of folders, metal clips, badges, etc. with miscellaneous paper.

How to Dispose



Bundle by tying up the stack both horizontally and vertically using paper strings. Paper boxes (tissue boxes, candy boxes, etc.), wrapping paper, paper bags, notebooks, pamphlets, copy paper, calendars, etc. may be bundled together with magazines.



Miscellaneous paper that cannot be bundled together with magazines should be placed in a paper bag. Put out when the bag is full, tying the top handles closed or vertically tying up the entire bag using string suitable for paper disposal.

Not all papers can be disposed of as miscellaneous paper.

Recycling Electric Home Appliances

Appliances Subject TVs, air conditioners, refrigerators, freezers, washing machines, clothes dryers

These Six Electric Home Appliances Cannot Be Disposed of at Waste Collection Point

The Home Appliance Recycling Law mandates the recycling of six electric home appliances: TVs, air conditioners, refrigerators, freezers, washing machines, and clothes dryers.

Category	TVs	Air Conditioners (indoor and outdoor equipment as a set)	Refrigerators, freezers	Washing machines	Clothes dryers
① Recycling fees	Please check with the post office as it varies depending on the manufacturer and size.				
② Collection fees	Confirm transportation costs that may be incurred with your retailer or collecting company.				

* Contact for manufacturers' recycling fees: **Electric Home Appliance Recycling Ticket Center TEL: 0120-319-640**

How to Dispose

(1) Trade-in when purchasing a replacement

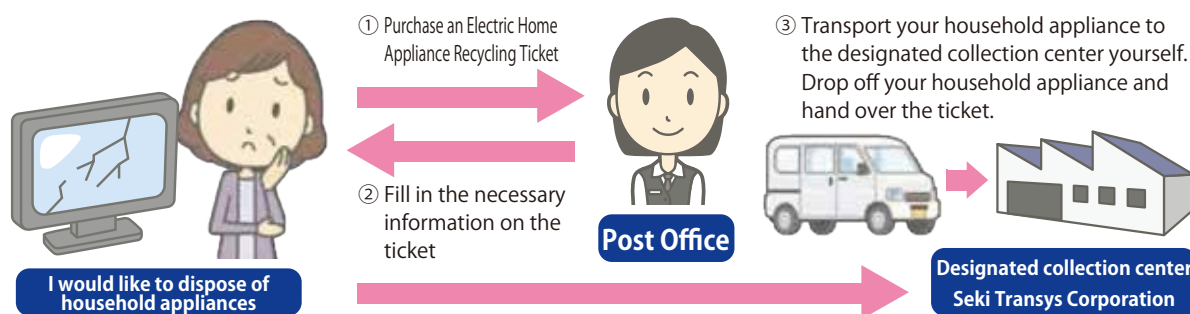
The retailer selling a qualifying new product is obliged to collect the item you are replacing, if you so wish. (Contact the retailer regarding transportation fees that apply to the collection)

(2) Collection by the retailer (the shop of purchase)

When you wish to dispose qualifying new product without purchasing a replacement, the retailer from which the appliance was purchased is obliged to collect the product. (Contact the retailer regarding transportation fees that apply to the collection)

(3) Directly drop off the unneeded product at a collection center designated by the manufacturer

You can drop off a used appliance at the following **designated collection center**.



Designated collection center

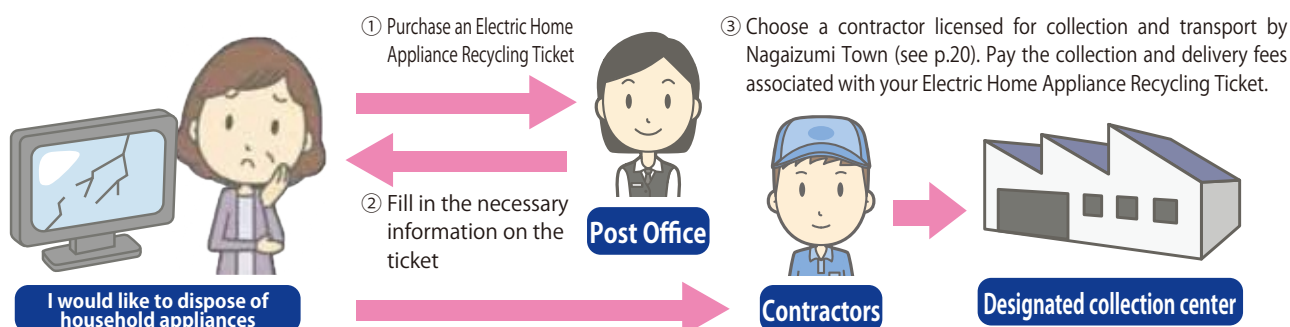
Seki Transys Corporation

515-1 Nameri, Nagaizumi Town

TEL 988-6868 FAX 988-6869

(4) Request collection from a certified general waste disposal contractor (see p.20)

When you are unable to deliver the appliance to the collection center in (3), you can request collection from a certified contractor. In this case, you must pay both the ① recycling fee and the ② transportation cost for collection.



* Please refer to pages 21-30 for a list of items in order of the alphabetical order.

Recycling Personal Computers

Act on the Promotion of Effective Utilization of Resources requires that manufacturers collect and recycle used computers. Personal computers are covered under the Act on Promotion of Recycling of Small Waste Electrical and Electronic Equipment, so they can be processed by the municipality.

If you would like the town to dispose of an old PC, please erase all data and bring it directly to the waste incineration plant.



◀ Ministry of Economy, Trade and Industry: Computer Recycling
(Act on the Promotion of Effective Utilization of Resources)
https://www.meti.go.jp/policy/it_policy/kaden/index02.html



Recycling Motorcycles



Motorcycles collected through the Motorcycle Recycling System will be recycled free of charge.

First, confirm whether your motorcycle qualifies for the Motorcycle Recycling System.

For details, contact
Motorcycle Recycling Call Center
☎050-3000-0727
<https://www.jarc.or.jp/motorcycle/contact/>



The designated motorcycle collection center in Nagaizumi Town is **Seki Transsys** (see p.16).

Recycling Deep Frying Oil

Try recycling your deep frying oil instead of throwing it out.



Overview

- Reusable oils** Sesame oil, salad oil, olive oil, corn oil, safflower oil, and other vegetable oils that are liquid at room temperature
- Non-reusable oils** Lard, coconut oil, and other cooking oils that are solid at room temperature. Engine oil, gear oil, and other mineral-based oils are also not accepted
- Disposal** Please put it in PET plastic bottles or other containers with a lid, and bring it directly to the waste incineration plant.
* Mondays through Fridays from 8:30 AM to 4:30 PM.

Disposing of Waste After a Large-Scale Disaster Department of Living Environment for details ☎989-5514

Large-scale disasters may create a large amount of cleanup waste such as broken furniture and tatami mats, as well as debris from damaged houses. Such waste is referred to as "disaster waste," and must be disposed of separately from "household waste" that is generated day-to-day.

■ Disposing of Waste After a Large-Scale Disaster

Household waste: Bring to your usual trash collection point

* Depending on a disaster's scale and the resulting situation, collection may not take place for a period of time.

Disaster waste: Bring to the temporary disposal site set up by the town

* The town will notify residents if a temporary disposal site is established.

■ Be sure not to dispose of disaster waste on public roads, or in vacant lots, parks, etc.

Apart from blocking the passage of emergency and work vehicles, it can lead to unsanitary conditions and prolong the clean-up process.

Following waste disposal rules during disasters will help with a swift recovery.

Be sure to do your part.

Disposal of Items Not Collected by the Municipality (Items That Must Not Be Disposed of with Other Trash/Recycling)

Items	Disposal	Businesses that can help	Contact	Map
Rocks, soil, sand Horticultural soil Roof tiles	Please dispose of these yourself. If you are unable to do so, assign a specialist	Marutama Transportation Co., Ltd. (Sekikengyō Co., Ltd.)	986-5317	③
Tires (Including wheels)	Request the services of a specialist	Daishin-Gomu.	923-8222	⑤
Batteries	Collected when having your tire(s) changed, or request the services of a specialist	Heiwa Recycle Co., Ltd.	986-3333	②
Parts of cars and bikes	Request the services of a specialist	Seki Transys Corporation	988-6868	①
Construction Waste Materials (Blocks, Concrete Debris)	Request the services of a specialist	Marutama Transportation Co., Ltd. (Sekikengyō Co., Ltd.)	986-5317	③
Construction waste materials (general)	Request the services of a specialist Request the services of a building contractor	Seki Transys Corporation	988-6868	①
Paint cans and paint	Request the services of a specialist	Seki Transys Corporation	988-6868	①
Propane gas cylinders	Inquire at the shop of purchase or with a specialist	Taisei Kouatsu, Inc.	986-5485	④
Fire extinguishers	Inquire at the shop of purchase or with a specialist	Ogawa Pump Industrial Company	986-7200	⑤
Concrete blocks, bricks, broken concrete chunks	Request the services of a specialist	Marutama Transportation Co., Ltd. (Sekikengyō Co., Ltd.)	986-5317	③
Pianos, organs, electric pianos, and electones	Inquire at the shop of purchase or with a specialist	Seki Transys Corporation	988-6868	①
Fireproof safes	Inquire at the shop of purchase or with a specialist	Seki Transys Corporation	988-6868	①
Agricultural chemicals	Inquire at the shop of purchase or with a specialist			
Tatami mats	Inquire at the shop of purchase or with a specialist	Seki Transys Corporation	988-6868	①
Plastic mulch sheets for agricultural use	Inquire at the shop of purchase or with a specialist	Seki Transys Corporation	988-6868	①
Agricultural machinery	Inquire at the shop of purchase or with a specialist	Seki Transys Corporation	988-6868	①
TVs, refrigerators, freezers, washing machines, clothes dryers, air conditioners	See p. 16	Designated collection sites in Nagaizumi Seki Transys Corporation	988-6868	①
Needles	Request the services of a specialist	Usagi Pharmacy	980-6820	⑥
Waste oils (Oil)	Request the services of a specialist	Seki Transys Corporation	988-6868	①
Waste oils (Gasoline)	Request the services of a specialist (* As these are dangerous substances, be sure that they are completely used up.)			
Waste oils (Kerosene)	Request the services of a specialist. (Check whether you can take this to your nearest gas station, and, if so, the conditions involved.)			

* Please check with the relevant business operators regarding processing fees.

* Please refer to pages 21-30 for a list of items in order of the alphabetical order.

Businesses Where You Can Dispose of Items Not Collected by the Municipality

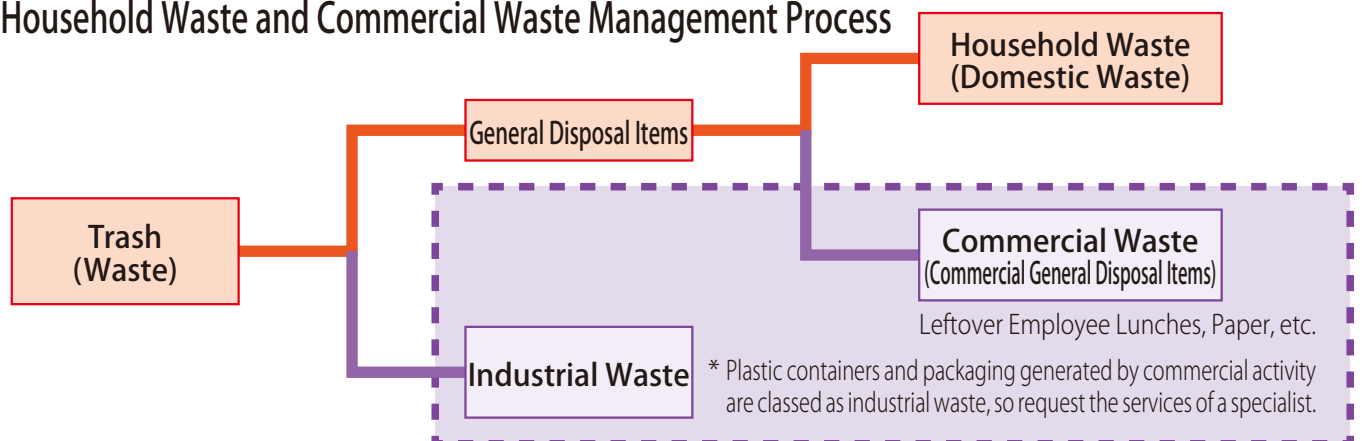
Number	Name of Business	Address	Telephone	Fax
①	Seki Transys Corporation	515-1 Nameri, Nagaizumi	988-6868	988-6869
②	Heiwa Recycle Co., Ltd.	480-1 Moto-Nagakubo, Nagaizumi	986-3333	986-4444
③	Marutama Transportation Co., Ltd. (Sekikengyō Co., Ltd.)	394-16 Minami-Ishiki, Nagaizumi	986-5317	987-0420
④	Taisei Kouatsu, Inc.	291--1 Honjuku, Nagaizumi	986-5485	986-5224
⑤	Daishin-Gomu.	319-144 Onoue, Ashitaka, Numazu	923-8222	924-5053
⑥	Usagi Pharmacy	283-1 Minami-Ishiki, Nagaizumi	980-6820	980-6821



Contractors Licensed in General Disposal Management

App. No.	Business name	Address	Telephone
1	Tokai Clean System Co., Ltd.	45-4 Kozuwa, Numazu	925-5553
2	Seki Transys Corporation	515-1 Nameri, Nagaizumi	988-6868
3	Heiwa Recycle Co., Ltd.	480-1 Moto-Nagakubo, Nagaizumi	986-3333
4	Japan Treatment Industry Co., Ltd.	281-61 Karuizawa, Kannami	974-2322
5	Akiyama Environmental Services Co., Ltd.	1982-54 Natsumegi, Yata, Mishima	972-1434
6	Maruman Industries Ltd.	37-7 Matoba, Shimizu-cho	976-7844
7	Taishū Ltd.	301-6 Icchōda, Mishima	986-6252
8	Noharasyoji Ltd.	2398-1 Ooka, Numazu	962-8788
9	Toho Enterprise Ltd.	521-1 Minami-Ishiki, Nagaizumi Belage I #103	986-1190
10	Nagaizumi Employment Center for Senior Citizens	1-10-9 Sakurazutsumi, Nagaizumi	988-2670
11	Nagaizumi Kankyo Co., Ltd.	608-1 Honjuku, Nagaizumi	999-7087
12	Matsuoka-Syoji, Inc.	299-1 Honjuku, Nagaizumi	986-9126
13	Tsuchiya Trading Co., Ltd.	458 Minami-Ishiki, Nagaizumi	989-1498
14	Housing Service ARAI	1719-1 Ooka, Numazu	976-8804

Household Waste and Commercial Waste Management Process



* Employers must take responsibility for and dispose of trash covered by the above criteria.

Sorting/Classification Guide and Disposal Tips

Order	Items	Classification/Sorting	Disposal tips
A▼	Abacuses	Plastic	Plastic waste (other)
		Made of wood	Burnable waste
	Agricultural machinery	[Must Not Be Disposed of with Other Trash/Recycling] (see p.18)	Request the services of a specialist.
	Agricultural plastic sheet / mulch	[Must Not Be Disposed of with Other Trash/Recycling] (see p.18)	Request the services of a specialist.
	Air Conditioners	[Must Not Be Disposed of with Other Trash/Recycling] (as per The Home Appliance Recycling Law (see p.16))	
	Air freshener containers (plastic)	Plastic waste (other)	Use up all contents. Dispose of ceramic ones as landfill waste.
	Air pumps	Recyclables (metal)	* Remove hoses and dispose them of as non-burnable waste (landfill).
	Air purifiers	Non-burnable waste (small household appliances)	Remove plastics and other materials and dispose of them separately.
	Aluminum cans	Recyclables (metal)	Place in the empty can container.
	Aluminum coated bags	Plastic waste (containers and packaging)	Clean residue from sweets, prepared food, etc. and dispose.
	Aluminum foil	Non-burnable waste (landfill waste)	
	Antennas (satellite antennas)	Non-burnable waste (small household appliances)	* Dispose of plastic items with plastic waste (other).
	Artificial turf	Plastic waste (other)	If you have more than 50 cm, you must bring it to the waste incineration plant yourself. Only for generated at private residences.
	Ash	Burnable waste	* Business incinerator ash [Must Not Be Disposed of with Other Trash/Recycling.]
	Astronomical telescopes	Recyclables (metal)	Remove detachable lenses, plastic, etc.
B▼	Baby bottles	Non-burnable waste (landfill waste)	* Dispose of plastic items with plastic waste (other).
	Baby seats/bouncers	Non-burnable waste (crushable waste)	Dismantle into pieces 50 cm or less.
	Baby slings	Recyclables (clothing)	Put out together with clothing. Do not put it out on rainy days or else cover it with a plastic bag.
	Backpacks	Non-burnable waste (crushable waste)	Remove as much metal as possible.
	Bags	Recyclables (clothing)	Place it in a plastic bag when putting it out. Do not put it out on rainy days or else cover it with a plastic bag.
	Bags	Recyclables (fabrics)	Place in a plastic bag with clothing. Includes non-woven fabric. Do not put it out on rainy days or else cover it with a plastic bag.
	Ballpoint pens	Non-burnable waste (landfill waste)	* Disassemble and dispose of plastic parts with plastic waste (other).
	Balls (for sports/toys)	Non-burnable waste (landfill waste)	* Dispose of plastic ones with plastic waste (other).
	Bamboo skewers	Burnable waste	Break the tips.
	Barrels / Buckets (plastic)	Plastic waste (other)	
	Baskets	Plastic	Plastic waste (other)
		Wood, bamboo	Burnable waste
	Bath covers	Non-burnable waste (crushable waste)	* Dispose of plastic items with plastic waste (other).
	Bath stools (plastic)	Plastic waste (other)	
	Bathing buckets / Bath heaters / Bathtubs	[Must Not Be Disposed of with Other Trash/Recycling]	Request the services of a specialist.
	Bathmats	Other than fabric	Diatomaceous earth bath mats are landfill waste.
		Cloth	Recyclables (clothing)
	Bathroom scales	Non-burnable waste (small household appliances)	
	Bats	Metals	Recyclables (metal)
		Made of wood	Burnable waste
	Batteries	PET plastic bottles, hazardous waste	Insulate with electrical tape or a similar product before placing them in the 18-liter drum at the collection point.
	Batteries	For vehicles and motorcycles	[Must Not Be Disposed of with Other Trash/Recycling] (see p.18)
		Others	[Must Not Be Disposed of with Other Trash/Recycling] (Example) Dyson batteries: non-genuine items must be brought to the waste incineration plant.
	Beach sandals	Non-burnable waste (landfill waste)	
	Beds	Main units	Recyclables (metal)
			Burnable waste
		Mats	Non-burnable waste (crushable waste)
	Beds with metal frames	Recyclables (metal) / other	* Baseboards are burnable waste. Mattresses are non-burnable waste (crushable).
	Bells	Recyclables (metal)	
	Belts	Non-burnable waste (landfill waste)	Dispose of leather items with recyclables.
	Bento box divider (Baran)	Plastic waste (other)	
	Bento lunch box containers (plastic)	Plastic waste (containers and packaging)	Rinse and dispose.
	Bicycles / Unicycles	Recyclables (metal)	
	Bird cages	Metals	Remove non-metallic items before disposing of them.
		Bamboo	Burnable waste
	Bladed items	Recyclables (metal)	Tape the blades to prevent cutting.
	Blankets	Recyclables (clothing)	Do not put it out on rainy days or else cover it with a plastic bag.
	Blinds	Recyclables (metal)	Dispose of plastic items with plastic waste (other).
	Blood pressure monitors (battery-operated)	Non-burnable waste (small household appliances)	
	Blue tarps	Plastic waste (other)	
	Books	Recyclables (waste paper)	Tie in bundles with string. Do not place out for pickup when rain is expected.
	Boots	Non-burnable waste (landfill waste)	
	Bottles / Jars (cloudy, for cosmetics)	Non-burnable waste (landfill waste)	

Order	Items	Classification/Sorting	Disposal tips
B▼	Bottles / Jars (for beverages, seasonings, etc.)	Recyclables (bottles and jars)	Use up all contents. Remove the top.
	Bottles / Jars (for makeup)	Recyclables (bottles and jars)	Use up all contents. Remove the top.
	Bowl (plastic, for cooking)	Plastic waste (other)	* Dispose of metal items with recyclables (metal).
	Bowling balls	Non-burnable waste (landfill waste)	
	Bowls (Chawan)	Ceramic items	Non-burnable waste (landfill waste)
		Plastic	Plastic waste (other)
	Box cutters	Recyclables (metal)	
	Braille paper	Burnable waste	* Specialty paper cannot be disposed of with recyclables.
	Braziers (hibachi)	Non-burnable waste (landfill waste)	* Dispose of non-landfill items by material.
	Brooms	Burnable waste	Cut into lengths of 50 cm or less and put out.
	Brooms (handles made of plastic-covered metal, broom portions made of plastic)	Separable	Non-burnable waste (landfill waste)
			Recyclables (metal)
	Brushes	Not separable	Non-burnable waste (landfill waste)
	Brushes	For bathroom use	Non-burnable waste (landfill waste)
		For toilets	Non-burnable waste (landfill waste)
	Brushes (paint, calligraphy, cosmetics)	Burnable waste	Lightly wash off any ink or paint.
	Buckets	Plastic	Plastic waste (other)
		Metals	Recyclables (metal)
	Buddha statues and similar items	Wooden images	Have appropriate ceremonies conducted, cut to an appropriate size, and drop off at the waste incineration plant. Otherwise request the services of a shrine, etc.
		Cast iron	Have appropriate ceremonies conducted, cut to an appropriate size, and drop off at the waste incineration plant. Otherwise request the services of a shrine, etc.
		Ceramic items	Have appropriate ceremonies conducted, cut to an appropriate size, and drop off at the waste incineration plant. Otherwise request the services of a shrine, etc.
	Buddhist altars	Burnable waste	Have appropriate ceremonies conducted, disassembled, and put out as individual boards. When bringing to the waste incineration plant directly, also bring as individual boards. Altars that have not been disassembled cannot be accepted.
	Bug catching cages (plastic)	Plastic waste (other)	
	Button badges	Recyclables (metal)	
	Button batteries	PET plastic bottles, hazardous waste	Place in the 18-liter drum at the collection site.
	Buttons	Plastic waste (other)	* Dispose of metal items with recyclables (metal).
C▼	Cabinets (wood)	Burnable waste	Disassemble, cut into lengths of 50 cm or less, and bundle together. You can also bring items to the waste incineration plant yourself.
	Calculators / Electronic organizers	Non-burnable waste (small household appliances)	* Remove batteries, and put them out as hazardous waste (batteries).
	Calligraphy bags	Non-burnable waste (crushable waste)	Empty contents before disposal.
	Calligraphy pads (felt)	Burnable waste	
	Cameras (conventional/digital)	Non-burnable waste (small household appliances)	* Remove batteries, and put them out as hazardous waste (batteries).
	Candles	Burnable waste	Items themselves are burnable waste. Sort packs by material and dispose of them.
	Cans (sweets, seaweed, tea)	Recyclables (metal)	Place large cans in with metals and small ones in the empty can collection basket.
	Canteens	Stainless steel	Recyclables (metal)
		Plastic	Plastic waste (other)
	Caps (lids)	Plastic	Plastic waste (containers and packaging)
		Metals	Recyclables (metal)
	Car navigation systems, Car TVs	Non-burnable waste (small household appliances)	
	Carbon paper	Burnable waste	* Cannot be disposed of with recyclables.
	Carcasses of pets, etc.	Burnable waste	Small animals can go into burnable waste. For larger animals, request the services of a specialist.
	Cardboard	Recyclables (waste paper)	Tie in bundles with string. Remove duct tape, etc.
	Cards with magnetic strips	Non-burnable waste (landfill waste)	
	Carpets	Non-burnable waste (crushable waste)	Fold compactly and tie up.
	Carpets	Non-burnable waste (crushable waste)	Fold compactly and tie up. Items with rubber backing are recyclables (fabric).
	Cassette cylinders	Recyclables (metal)	Use all content and place them in the empty can collection basket. Do not puncture them before disposal.
	Cassette decks	Non-burnable waste (small household appliances)	
	Cassette gas stove	Items with batteries	Non-burnable waste (small household appliances)
		Without batteries	Recyclables (metal)
	Cassette tapes	Non-burnable waste (landfill waste)	Put out cases with plastic waste (other).
	Castanets (musical instrument)	Burnable waste	Only the wood. <u>Dispose of other parts by material.</u>
	Cat litter	Burnable waste	
	CD players	Non-burnable waste (small household appliances)	* Disassemble wooden speakers and dispose of materials separately.
	CDs	Non-burnable waste (landfill waste)	Dispose of cases, papers, and CDs according to material.
	Cellular phones	Non-burnable waste (small household appliances)	Whenever possible return to the place of purchase.
	Ceramic items	Non-burnable waste (landfill waste)	
	Ceramic knives	Recyclables (metal)	
	Chairs (metal)	Recyclables (metal)	* Wooden chairs are burnable waste. Remove any cushions.
	Chairs (Zaisu)	Non-burnable waste (crushable waste)	* Disassemble when possible and dispose of according to materials.

Order	Items	Classification/Sorting	Disposal tips
C▼	Charcoal	Burnable waste	
	Chargers	Non-burnable waste (small household appliances)	
	Child car seats	Non-burnable waste (crushable waste)	
	Children's inflatable pools	Plastic waste (other)	
	Chopsticks	Burnable waste	
	Cigarette butts	Burnable waste	Note: Ones that have been soaked with water or otherwise completely extinguished.
	Cinder blocks / Bricks	[Must Not Be Disposed of with Other Trash/Recycling]	Request the services of a specialist.
	Clay / Paper clay	Non-burnable waste (landfill waste)	
	Clear plastic folders	Plastic waste (other)	
	Cleats	Non-burnable waste (landfill waste)	Remove spikes when possible and dispose of them according to material.
	Clips	Recyclables (metal)	Dispose of plastic items with plastic waste (other).
	Clocks (metal)	Non-burnable waste (small household appliances)	* Remove batteries, and put them out as hazardous waste (batteries).
	Clothes	Recyclables (clothing)	Place it in a plastic bag when putting it out for pickup. Do not put it out on rainy days or else cover it with a plastic bag.
	Clothes dryers	[Must Not Be Disposed of with Other Trash/Recycling] (as per The Home Appliance Recycling Law (see p.16))	
	Clothespins (plastic)	Plastic waste (other)	Separate plastic and metal. Dispose of materials separately.
	Clothing / Fabric	Recyclables (clothing)	Place it in a plastic bag when putting it out. Do not put it out on rainy days or else cover it with a plastic bag.
	Clothing boxes	Made of paper or wood	Disassemble, fold, and put out. Cardboard goes out with recyclables.
		Metals	Do not put anything inside.
		Plastic	Do not put anything inside.
	Coating materials	[Must Not Be Disposed of with Other Trash/Recycling] (see p.18)	* For small quantities, absorb with paper or similar and dispose of as burnable waste.
	Coffee bags	Plastic waste (containers and packaging)	
	Concrete debris	[Must Not Be Disposed of with Other Trash/Recycling] (see p.18)	Request the services of a specialist.
	Condiment bottles/jars	Recyclables (bottles and jars)	Use all contents, rinse inside, and dispose.
	Condiment containers (plastic)	Plastic waste (containers and packaging)	Use all contents, rinse inside, and dispose.
	Contact lenses	Non-burnable waste (landfill waste)	Lenses are landfill waste. Dispose of containers according to their material.
	Containers (plastic)	Plastic waste (other)	
	Containers for agricultural chemicals and other chemicals	[Must Not Be Disposed of with Other Trash/Recycling] (see p.18)	Request the services of a specialist.
	Cooking utensils (metal)	Recyclables (metal)	* Dispose of items other than metal by material.
	Cooler bags	Non-burnable waste (crushable waste)	
	Coolers	Plastic waste (other)	
	Cooling gel sheets	Non-burnable waste (landfill waste)	
	Cooling mats	Recyclables (clothing)	Do not put it out on rainy days or else cover it with a plastic bag.
	Cooling packs	Non-burnable waste (landfill waste)	
	Copy machines	Recyclables (metal)	* Only for items used at home. Items used by businesses [Must Not Be Disposed of with Other Trash/Recycling].
	Corrugated plastic sheets	[Must Not Be Disposed of with Other Trash/Recycling]	
	Corrugated steel sheets	Metals	Construction waste.
		Plastic	Construction waste.
	Corrugates steel sheets	Recyclables (metal)	Those used for the walls of homes or warehouses are construction waste.
	Cosmetic bottles	Non-burnable waste (landfill waste)	Use up all contents. Remove lids and dispose of them according to materials.
	Cotton	Burnable waste	
	Cotton swabs	Burnable waste	Sanitary products.
	Crayons / Coupy pencils	Non-burnable waste (landfill waste)	
	Credit cards	Non-burnable waste (landfill waste)	* Remove personally identifiable information. Cut into small pieces.
	Cup noodle containers	Plastic	* Paper lids with aluminum lining are recyclables. Rinse containers with water.
		Paper containers	* Paper lids with aluminum lining are recyclables. Rinse containers with water.
	Cups / Mugs	Glass	Non-burnable waste (landfill waste)
		Plastic	Plastic waste (other)
	Curtain rails	Recyclables (metal)	
	Curtains	Recyclables (clothing)	Place it in a plastic bag when putting it out. Do not put it out on rainy days or else cover it with a plastic bag.
	Cushioning material (plastic)	Plastic waste (containers and packaging)	
	Cushions with microbead filling	Non-burnable waste (landfill waste)	If only the beads are bagged, put out with plastic waste (other).
	Cutting boards (wood)	Burnable waste	* Dispose of plastic items with plastic waste (other).
	Cylindrical lunch canisters	Non-burnable waste (landfill waste)	
D▼	Deep frying guards (aluminum)	Recyclables (metal)	Lightly wash.
	Deodorizer	Plastic	Plastic waste (other)
		Glass, ceramic	Non-burnable waste (landfill waste)
	Desk lamps	Non-burnable waste (small household appliances)	Remove the plastic parts of fluorescent tubes, bulbs, and shade.
	Desk mats	Plastic waste (other)	
	Desks	Steel	Recyclables (metal)
		Made of wood	Burnable waste
	Diaper covers	Non-burnable waste (landfill waste)	
	Diapers (adult/children)	Burnable waste	Put waste from disposable diapers in the toilet before putting them in the trash.

Order	Items	Classification/Sorting	Disposal tips
D▼	Diatomaceous earth bath mats	Non-burnable waste (landfill waste)	Contact the shop of purchase.
	Dictionaries (paper)	Recyclables (paper)	
	Disaster hood covers	Non-burnable waste (crushable waste)	
	Disaster hoods	Non-burnable waste (crushable waste)	
	Dish dryers	Non-burnable waste (small household appliances)	* Remove plastic and glass pieces. Built-in kitchen models are not included here.
	Dishes	Ceramic items	Non-burnable waste (landfill waste)
		Plastic	Plastic waste (other)
		Metals	Recyclables (metal)
	Disposable face masks	Burnable waste	Sanitary products.
	Doll cases (plastic)	Plastic waste (other)	Fold compactly and put out. Dispose of glass as non-burnable waste (landfill waste).
	Doll clothes	Burnable waste	Dispose of plastic items with plastic waste (other).
	Dolls (including decorative dolls)	Non-burnable waste (landfill waste)	
	Drawers	Burnable waste	Disassemble and cut into lengths of 50 cm or less and bundle together. You can also bring items to the waste incineration plant yourself.
	Dressers	Non-burnable waste (crushable waste)	Bring it to the waste incineration plant yourself.
	Drum cans	[Must Not Be Disposed of with Other Trash/Recycling]	* Drop off items used at home at the waste incineration plant yourself.
	Dryers	Non-burnable waste (small household appliances)	Home use only.
	Drying agents	Non-burnable waste (landfill waste)	Silica gel, etc.
	Drying rod supports	Recyclables (metal)	* For concrete bases, request the services of a specialist.
	Drying rods	Recyclables (metal)	Cut into lengths of 2 m or less.
	Duct tape (paper/cloth)	Burnable waste	
	Dumbbells	Recyclables (metal)	* Dispose of plastic items with plastic waste (other).
E▼	Earphones	Non-burnable waste (small household appliances)	Whenever possible put out with other small home appliances you want to dispose of.
	Earrings	Non-burnable waste (landfill waste)	Dispose of metal items with other metal.
	Earthenware pots	Non-burnable waste (landfill waste)	
	Egg cartons	Plastic waste (containers and packaging)	* Paper products should be disposed of as recyclables along with magazines.
	Electric adjustable beds	Non-burnable waste (crushable waste)	Drop off at the waste incineration plant.
	Electric blankets	Non-burnable waste (crushable waste)	Fold compactly and put out.
	Electric carpets	Non-burnable waste (small household appliances)	
	Electric cords	Non-burnable waste (small household appliances)	
	Electric hair clippers	Non-burnable waste (small household appliances)	Both electric and manual. (Only for items used at home.)
	Electric heaters	Non-burnable waste (small household appliances)	
	Electric kettles	Non-burnable waste (small household appliances)	* Items used only for insulation or keeping liquids warm are non-burnable waste (landfill).
	Electric pianos	[Must Not Be Disposed of with Other Trash/Recycling] (see p.18)	
	Electric razors (rechargeable)	Non-burnable waste (small household appliances)	* Remove batteries, and put them out as hazardous waste (batteries).
	Electric toothbrushes	Non-burnable waste (small household appliances)	Non-electric toothbrushes are burnable waste.
	Enamel pots	Recyclables (metal)	
	Entrance mats	Metal	Recyclables (metal)
		Rubber / Fabric	Non-burnable waste (landfill waste)
	Envelopes with windows	Burnable waste	* Remove the plastic.
	Exercise machines	Non-burnable waste (small household appliances)	As with fitness equipment, bring large items directly to the waste incineration plant.
	Extension cords	Non-burnable waste (small household appliances)	Roll up and tie.
F▼	Fabric scraps	Burnable waste	
	Fallen leaves / Wood chips	Burnable waste	
	Family Computer (Nintendo)	Non-burnable waste (small household appliances)	
	Fans	Non-burnable waste (small household appliances)	
	Fax machines (for home use)	Non-burnable waste (small household appliances)	* You can also bring them to the waste incineration plant yourself. Items used by businesses [Must Not Be Disposed of with Other Trash/Recycling.]
	Files / Binders	Recyclables (metal / waste paper)	Disassemble and dispose of by material.
		Plastic waste (other)	
	Film negatives	Plastic waste (other)	* Put out film cases as plastic waste. (containers and packaging)
	Fire extinguishers	[Must Not Be Disposed of with Other Trash/Recycling] (see p.18)	Request the services of a specialist.
	Fire extinguishers (spray type)	Recyclables (metal)	Use the contents completely. (Fire extinguishers [Must Not Be Disposed of with Other Trash/Recycling.] Request the services of a specialist.)
	Fireworks	Used items	Burnable waste
		Unused items	[Must Not Be Disposed of with Other Trash/Recycling]
	Fishing rods	Non-burnable waste (landfill waste)	* Bamboo and non-metal items are burnable waste.
	Fitness equipment (metal)	Recyclables (metal)	Chin-up bars, treadmills, etc. Remove everything but the metal parts.
	Flares (for vehicles)	[Must Not Be Disposed of with Other Trash/Recycling] (Industrial Waste)	Contact Seki Transys Corporation for service.
	Flashlights	Non-burnable waste (small household appliances)	Disassemble items whenever possible and dispose of parts with plastic waste (other), recyclables (metal), or others as appropriate.
	Floodlights (home use)	Non-burnable waste (small household appliances)	Items used by business and industry [Must Not Be Disposed of with Other Trash/Recycling.]
	Floor cushions	Non-burnable waste (crushable waste)	
	Floppy disks	Non-burnable waste (landfill waste)	

Order	Items		Classification/Sorting	Disposal tips	
F▼	Flowerpots	Unglazed	Non-burnable waste (landfill waste)	Clean off soil or other residue before putting it out.	
		Plastic	Plastic waste (other)	Clean off soil or other residue before putting it out.	
	Fluorescent tubes		PET plastic bottles, hazardous waste	Place in the provided containers. Put broken fluorescent lights into a clear bag before putting them out.	
	Foam bricks (for flower arranging)		Non-burnable waste (landfill waste)		
	Food cans		Recyclables (metal)	Lightly wash. Put lids in a can with a lid and dispose.	
	Food trays		Plastic waste (containers and packaging)	Wash before disposal.	
	Food waste		Burnable waste	Drain well before disposal.	
	Forks	Metals	Recyclables (metal)		
		Plastic	Plastic waste (other)		
	Frying pans		Recyclables (metal)	Remove wooden handles whenever possible before disposing.	
	Fur (kimono, scarfs)		Recyclables (clothing)	Do not put it out on rainy days or else cover it with a plastic bag.	
	Furniture (wood)		Burnable waste	Disassemble and bundle together into lengths of 50 cm or less. You can also bring items to the waste incineration plant yourself.	
	Fuse beads (toys)		Plastic waste (other)		
	Futon covers		Recyclables (clothing)	Tie in bundles with string together with clothing. Do not put it out on rainy days or else cover it with a plastic bag.	
	Futons / Floor cushions		Non-burnable waste (crushable waste)	No more than two futons can be put out at the same time. Down quilts go out with recyclables.	
G▼	Game cartridges		Non-burnable waste (landfill waste)	* Put out cases with plastic waste (other).	
	Garden stakes (metal)		Recyclables (metal)	Must be covered by plastic and be bundled together in less than 2 m lengths.	
	Gas cylinders		[Must Not Be Disposed of with Other Trash/Recycling] (see p.18)	Request the services of a specialist.	
	Gas stoves (gas range)		Non-burnable waste (small household appliances)	* Dispose of rubber gas hoses as non-burnable waste (landfill).	
	Gasoline		[Must Not Be Disposed of with Other Trash/Recycling] (see p.18)	Use it up.	
	Glass	Glass sheets	Non-burnable waste (landfill waste)		
		Glass bottles	Recyclables (bottles and jars)	Remove lids and line them up at the collection point for recyclable garbage.	
	Glass products		Non-burnable waste (landfill waste)	Cups, tableware, heat-resistant glass, crystal glass, ashtrays, vases, etc.	
	Glasses		Non-burnable waste (landfill waste)		
	Gloves		Burnable waste	* Dispose of rubber gloves as non-burnable waste (landfill).	
	Gloves (leather)		Recyclables (fabrics)	* Dispose of other material gloves as non-burnable waste (landfill). Do not put it out on rainy days or else cover it with a plastic bag.	
	Glow lamps		Non-burnable waste (landfill waste)		
	Goggles		Plastic waste (other)	Dispose of metal items with recyclables.	
	Golf bags		Non-burnable waste (crushable waste)	* Remove as much metal as possible.	
	Golf balls		Non-burnable waste (landfill waste)		
	Golf clubs (irons)		Recyclables (metal)	Tie with string. * Wood and carbon clubs are non-burnable waste (landfill).	
	Grass / Flowers		Burnable waste	Remove soil from the roots and dispose of it in designated bags.	
	Grass cutters		Recyclables (metal)		
	Guitars / Electric guitars		Non-burnable waste (crushable waste)		
	H▼	Hair		Burnable waste	
		Hair bands		Non-burnable waste (landfill waste)	
		Hair brushes		Non-burnable waste (landfill waste)	* Dispose of plastic items with plastic waste (other).
		Hair color containers		Non-burnable waste (landfill waste)	The caps are plastic, main containers are landfill.
		Hairpins		Recyclables (metal)	
		Hammers		Recyclables (metal)	* If removable, take off the handle before disposing.
		Handheld fans (Uchiwa, plastic)		Plastic waste (other)	* Any paper can be removed by soaking in water. Handheld fans made of bamboo are burnable waste.
		Hangers	Wire / Metal	Recyclables (metal)	
			Plastic	Plastic waste (other)	* Remove as much metal as possible.
			Made of wood	Burnable waste	If it has metal that cannot be removed, it is non-burnable waste (crushable waste).
Harmonicas		Recyclables (metal)			
Hats		Non-burnable waste (landfill waste)			
Heat packs (disposable)		Non-burnable waste (landfill waste)			
Heat packs (Hokkairo)		Non-burnable waste (landfill waste)	The bags are plastic trash. Used Heat packs are landfill waste.		
Heated carpets		Non-burnable waste (crushable waste)	Fold compactly and put out.		
Heated tables (Kotatsu)		Frames	Non-burnable waste (crushable waste)	Remove legs. Disassemble to whatever extent possible and dispose of according to materials.	
		Tops	Non-burnable waste (crushable waste)	For items meant for six people, cut them to 50 cm or less, and bring them to the plant yourself.	
Heaters with fans		Non-burnable waste (small household appliances)	Empty any fuel from the bottom of the fuel tank.		
Helmets		Non-burnable waste (landfill waste)	Does not include those used during the course of business. Return to your company on resignation.		
Hose winders (Plastic)		Main units	Plastic waste (other)		
		Hoses	Non-burnable waste (landfill waste)		
Hoses (plastic)		Non-burnable waste (landfill waste)	Roll up, tie, and dispose. Dispose of rubber ones as landfill waste.		
Hot water bottles (metal)		Recyclables (metal)	* Dispose of plastic items with plastic waste (other).		
Hotplates		Non-burnable waste (small household appliances)	* Glass lids, etc. are landfill waste.		
I▼		Indoor shoes		Recyclables (clothing/shoes)	Extremely dirty shoes, or only one of a pair, are non-burnable waste (landfill).
		Ink cartridges		Non-burnable waste (landfill waste)	Some stores offer in-store collection, so try to use this service whenever possible.
		Ink ribbons		Non-burnable waste (landfill waste)	

Order	Items	Classification/Sorting	Disposal tips
I▼	Insecticides (fumigating)	Non-burnable waste (landfill waste)	Be sure to completely use up fumigating products like Varsan before disposing of them.
	Insulated pots / Thermoses	Non-burnable waste (landfill waste)	* Items with metal exteriors are recyclables. Electric pots are small home appliances.
	Insulation	[Must Not Be Disposed of with Other Trash/Recycling]	Request the services of a specialist.
	Ironing boards	Non-burnable waste (crushable waste)	
	Irons	Non-burnable waste (small household appliances)	Remove any detachable plastic.
J▼	Joined mats	Plastic waste (other)	* Dispose of cork mats as non-burnable waste (landfill).
	Juicers / Mixers	Non-burnable waste (small household appliances)	* Remove plastic and glass pieces.
	Jump ropes	Plastic waste (other)	
K▼	Karaoke sets	Non-burnable waste (small household appliances)	* Dispose of karaoke tapes as non-burnable waste (landfill).
	Kerosene	[Must Not Be Disposed of with Other Trash/Recycling]	Ask about disposal at your local gas station.
	Kerosene heaters	Battery operated	Remove kerosene before disposal.
		Others	
	Ketchup containers	Plastic waste (containers and packaging)	Use up all contents. Remove lids and dispose of them according to materials.
	Kettles	Recyclables (metal)	
	Keyboard harmonicas (melodicas)	Non-burnable waste (landfill waste)	
	Keychains (metal)	Recyclables (metal)	Put in a can with a lid with other small metal items like nails.
	Kitchen knives	Recyclables (metal)	Tape the blades to prevent cutting. Remove wooden portions whenever possible before disposing.
	Knitting machines	Non-burnable waste (small household appliances)	Remove thread.
	Knives / Machetes	Recyclables (metal)	Tape the blades to prevent cutting. Remove wood.
	Laserdiscs	Non-burnable waste (landfill waste)	Paper cases are recyclables. Put out plastic cases with plastic waste (other).
	Laundry baskets (plastic)	Plastic waste (other)	
L▼	Laundry hangers	Plastic	Separate plastic and metal. Dispose of materials separately.
		Metal and plastic	
	Leaflets	Recyclables (waste paper)	Tie in bundles with string. OK to dispose along with the newspaper.
	Leather products	Non-burnable waste (crushable waste)	* Items without metal or other non-burnable materials are burnable waste.
	Life science studies bag (elementary school students)	Non-burnable waste (crushable waste)	Empty contents before disposal.
	Light bulbs, etc.	Non-burnable waste (landfill waste)	* Mercury lamps are disposed of as hazardous waste (fluorescent tubes).
	Light shielding bins	Recyclables (bottles and jars)	Dispose of parts that come with it as their respective materials.
	Lighters	Disposable	(Note) Completely use up the contents before disposal. * If they are not completely empty, bring them directly to the waste incineration plant.
		Metals	(Note) Completely use up the contents before disposal.
	Lighting fixtures	Non-burnable waste (small household appliances)	* Remove plastics and other materials and dispose of them separately.
	Lipstick containers	Plastic waste (other)	Use up all lipstick and dispose.
	Lockers (metal)	Recyclables (metal)	Bring it to the waste incineration plant yourself. (Only for items used at home)
	Magazines	Recyclables (waste paper / magazines)	Tie in bundles with string.
	Magic ink markers	Non-burnable waste (landfill waste)	* Dispose of the cap with plastic waste (other).
	Magnetic mats	Non-burnable waste (crushable waste)	Tie up compactly.
M▼	Magnets	Non-burnable waste (landfill waste)	
	Makeup compacts / Palettes	Non-burnable waste (landfill waste)	Use up all lipstick and dispose.
	Makeup tubes/containers	Plastic waste (containers and packaging)	Use up all contents. Remove lids and dispose of them according to materials.
	Manicure set containers	Recyclables (bottles and jars)	Use up all lipstick and dispose.
	Massage chairs	Non-burnable waste (crushable waste)	Bring it to the waste incineration plant yourself.
	Matches	Burnable waste	Soak in water for at least a day before disposal.
	Mattresses	Non-burnable waste (crushable waste)	Fold compactly and put out.
	Mayonnaise containers	Plastic waste (containers and packaging)	Use up all contents.
	Measuring tape	Recyclables (metal)	* Dispose of plastic items with plastic waste (other).
	Mechanical pencils	Non-burnable waste (landfill waste)	* Disassemble and dispose of plastic parts with plastic waste (other).
	Medical compresses	Burnable waste	Sanitary products * Put out any cellophane removed as plastic waste (other).
	Medicine	Burnable waste	<u>Sort by material.</u>
	Medicine containers (plastic)	Plastic waste (containers and packaging)	
	Melodicas	Non-burnable waste (crushable waste)	
	Menstrual products	Burnable waste	Used sanitary napkins, tampons, and paper or cloth with blood on it.
	Metronome	Non-burnable waste (small household appliances)	
	Microscopes (metal)	Recyclables (metal)	Dispose of plastic items with plastic waste (other).
	Microwave ovens	Non-burnable waste (small household appliances)	
	Milk cartons	Paper cartons	Rinse with water, open, and tie with string.
		With aluminum inside	* Dispose of plastic caps with plastic waste (containers and packaging).
	Mirrors	Non-burnable waste (landfill waste)	
	Mite repellent	Plastic waste / Recyclables	Plastic containers are plastic (containers and packaging). Metal items are recyclables.
	Moisture absorber (Dry Pet, etc.)	Plastic waste (containers and packaging)	Empty any accumulated liquid.
	Mops	Non-burnable waste (landfill waste)	

Order	Items	Classification/Sorting	Disposal tips
M▼	Motorcycles	[Must Not Be Disposed of with Other Trash/Recycling] (see p.18)	Request the services of a specialist.
	Musical instruments (small)	* Sort by material	
N▼	Nabeyaki Udon pots (aluminum)	Non-burnable waste (landfill waste)	Rinse and dispose.
	Nail clippers	Recyclables (metal)	* Remove any detachable plastic.
	Nails, screws, and other small metal items	Recyclables (metal)	Put in a can with a lid and dispose with other small metal items. Do not put it in the collection basket.
	Neckties	Recyclables (fabrics)	Place in a plastic bag with clothing. Do not put it out on rainy days or else cover it with a plastic bag.
	Needles	Recyclables (metal)	Put in a canister with a lid and dispose.
	Newspaper	Recyclables (waste paper)	Tie in bundles with string. Can be bundled together with ads and flyers.
	Non-woven fabric	Non-burnable waste (landfill waste)	Disposable masks are sanitary products and so burnable waste.
O▼	Oil (edible oils)	Burnable waste Recyclables	For small quantities, absorb with paper or similar and dispose of as burnable waste. For large quantities, bring directly to the waste incineration plant as recyclables.
	Oil (vegetable and mineral oils)	[Must Not Be Disposed of with Other Trash/Recycling] (see p.18)	* For small quantities, absorb with paper or similar and dispose of as burnable waste.
	Oil cans	Recyclables (metal)	Use up all contents and make sure no residual oil can seep out when disposed of.
	Oil heaters	[Must Not Be Disposed of with Other Trash/Recycling]	Contact the manufacturer or Seki Transys Corporation.
	Oil paper	Burnable waste	* Note: Cannot be disposed of with recyclables (waste paper).
	Omamori / Ofuda (talismans)	Burnable waste	Whenever possible dispose properly at shrines or temples.
	Pads (knee, shoulder, chest)	Burnable waste	
P▼	Paint	[Must Not Be Disposed of with Other Trash/Recycling] (see p.18)	* For small quantities, absorb with paper or similar and dispose of as burnable waste.
	Paint cans	Cans	Recyclables (metal)
		Plastic	Non-burnable waste (landfill waste)
	Paint cans (empty)	Recyclables (metal)	Wipe up any contents with a cloth, etc.
	Paints (plastic tube)	Plastic waste (containers and packaging)	Use up all contents. Metal tubes are non-burnable waste (landfill).
	Palettes (for painting)	Plastic waste (other)	Lightly wash off the paint.
	Paper boxes	Recyclables (waste paper)	Flatten boxes and bundle them with cardboard.
	Paper cups	Recyclables (waste paper)	
	Paper shredders	Non-burnable waste (landfill waste)	Disassemble whenever possible and dispose of materials separately. Electric ones are small household appliances.
	Paperweights (for calligraphy)	Recyclables (metal)	Remove strings, etc.
	Peanut massage rollers	Non-burnable waste (landfill waste)	Release all the air before disposal.
	Pencil cases	Non-burnable waste (landfill waste)	For items that are not non-burnable waste (landfill waste), dispose of by material.
	Permanent marker	Non-burnable waste (landfill waste)	Dispose of the cap with plastic waste (other).
	Personal alarms	Non-burnable waste (small household appliances)	Remove cords and batteries.
	Personal computers	Non-burnable waste (small household appliances)	* Bring to the waste incineration plant yourself or dispose of yourself. Do not put it out at the trash collection point.
	Personal seals	Burnable waste	
	Pet droppings	Burnable waste	Wrap in paper before disposal.
	Pet litter	Burnable waste	* Remove solid waste and dispose of it as burnable waste. * Put out pet litter whenever you change it, otherwise the bags get too heavy.
	PET Plastic Bottles	PET plastic bottles, hazardous waste	Wash lightly, crush, and place in the designated collection basket.
	Photo albums	Burnable waste	Remove and dispose of vinyl, plastic, metal, etc.
	Photographs	Burnable waste	
	Pianos / Organs	[Must Not Be Disposed of with Other Trash/Recycling]	Request the services of a specialist.
	Pickaxes (for home use)	Recyclables (metal)	* If the handle is wooden or other non-metallic items, remove the handle and dispose of it.
	Picnic sheets	Non-burnable waste (crushable waste)	
	Picture frames	Plastic	Plastic waste (other)
		Made of wood	Burnable waste
		Metals	Recyclables (metal)
	Pillows	Non-burnable waste (crushable waste)	* Buckwheat husk pillows are burnable waste.
	Pipe cleaners	Recyclables (metal)	* Dispose of plastic items with plastic waste (other).
	Planters	Plastic waste (other)	Lightly wash.
	Plasterboard	[Must Not Be Disposed of with Other Trash/Recycling]	
	Plastic (agricultural use)	[Must Not Be Disposed of with Other Trash/Recycling] (see p.18)	Request the services of a specialist.
	Plastic bags / Plastic products	Plastic waste (other)	Lightly wash.
	Plastic containers	Plastic waste (other)	
	Plastic containers / Plastic fuel tanks	Plastic waste (other)	Lightly wash.
	Plastic hair bands	Plastic waste (other)	
	Plastic models	Plastic waste (other)	* Remove batteries, motors, gears, etc.
	Pogo sticks	Recyclables (metal)	
	Ponchos / Raincoats	Plastic waste (other)	* Dispose of rubber ones as landfill waste.
	Pots / Enamel pots	Recyclables (metal)	* Dispose of heat-resistant glass pot lids as non-burnable waste (landfill waste).
	Pottery / Ceramics	Non-burnable waste (landfill waste)	
	Power tools	Non-burnable waste (small household appliances)	Only for items used at home.
	Printers (for PCs, etc.)	Non-burnable waste (small household appliances)	Remove ink ribbons and toner cartridges, and dispose of them as non-burnable waste (landfill).
	Propane gas cylinders	[Must Not Be Disposed of with Other Trash/Recycling] (see p.18)	Request the services of a specialist.
	Pruned branches / Fallen leaves	Burnable waste	Tie in bundles with rope, hemp twine, string, etc.

Order	Items	Classification/Sorting	Disposal tips
P▼	Pruned branches of plants or trees	Burnable waste	Cut into lengths of 50 cm or less and bundle together. This is for branches 5 cm or less in diameter. For those 5 cm or more in diameter, bring directly to the waste incineration plant. You can put out up to five bundles at once. Any more than that, bring to the waste incineration plant yourself.
	Puzzles (cardboard)	Recyclables (waste paper)	
R▼	Racket strings	Burnable waste	For natural materials. Dispose of plastic items with plastic waste (other).
	Rackets (wood, carbon, etc.)	Burnable waste	* Dispose of metal items with recyclables (metal).
	Radios / Radio cassette players	Non-burnable waste (small household appliances)	Remove batteries.
	Razor blades	Recyclables (metal)	Put in a can with a lid and dispose with nails, screws, etc.
	Razors (plastic handles)	Non-burnable waste (landfill waste)	* Dispose of metal items with recyclables (metal).
	Receipts	Burnable waste	
	Rechargeable batteries	PET plastic bottles, hazardous waste	Insulate them before disposal.
	Recorders (musical instrument)	Plastic waste (other)	* Dispose of metal items with recyclables.
	Records	Non-burnable waste (landfill waste)	Paper cases are recyclables. Put out plastic cases with plastic waste (other).
	Red ink pads	Non-burnable waste (landfill waste)	
	Reels	Recyclables (metal)	Remove the fishing line. * Prepare the line so it does not tangle and put out with plastic waste (other).
	Refrigerators / Freezers	[Must Not Be Disposed of with Other Trash/Recycling] (as per The Home Appliance Recycling Law (see p.16))	
	Remote controlled items	Non-burnable waste (small household appliances)	Put out according to the material. Remove batteries.
	Remote controls	Non-burnable waste (small household appliances)	Remove batteries.
	Rice bins	Recyclables (metal)	* Dispose of plastic items with plastic waste (other).
	Rice bran	Burnable waste	Whenever possible use up at home. Due to its weight, bring it directly to the waste incineration plant.
	Rice cookers	Non-burnable waste (small household appliances)	* Dispose of inner pots as recyclables (metal). Dispose of carbon ones as landfill waste.
	Ring files / Binders	Burnable waste / other	* Remove metal parts and dispose of them as recyclables (metal).
	Roof tiles	[Must Not Be Disposed of with Other Trash/Recycling]	Bring to Marutama Transportation Co., Ltd.
	Rope (hemp)	Burnable waste	Roll up for disposal. * Dispose of plastic items with plastic waste (other).
	Rubber and plastic hoses	Non-burnable waste (landfill waste)	
	Rubber bands	Non-burnable waste (landfill waste)	
	Rubber erasers	Non-burnable waste (landfill waste)	
	Rubber products (excluding tires)	Non-burnable waste (landfill waste)	Rubber gloves, rubber boots, rubber bands, rubber gaskets, etc.
	Rugs	Non-burnable waste (crushable waste)	Cut long items into sections and roll them up.
	Rulers / Triangular rulers	Plastic waste (other)	
S▼	Safes (fireproof)	[Must Not Be Disposed of with Other Trash/Recycling] (see p.18)	* Dispose of portable safes with recyclables (metal).
	Safety pins	Recyclables (metal)	Put out with other small metal items whenever possible.
	Sake packs (silver inside)	Recyclables (waste paper)	* Dispose of plastic spouts with plastic waste (containers and packaging).
	Sandals/Crocs	Non-burnable waste (landfill waste)	
	Sauce containers	Plastic waste (containers and packaging)	Use all contents, rinse inside, and dispose.
	Saws	Recyclables (metal)	Tape the blades to prevent cutting. Remove wood.
	Scales	Recyclables (metal)	
	School backpacks (hard cased)	Non-burnable waste (crushable waste)	Remove as much metal as possible.
	Scissors	Recyclables (metal)	
	Scoops	Recyclables (metal)	* If the handle is wooden or other non-metallic items, cut the handle and dispose of it.
	Screen door mesh	Plastic waste (other)	If replacing yourself, dispose of rubber as landfill waste and the mesh as plastic waste (other).
	Screwdrivers (see tools)	Recyclables (metal)	Home use only.
	Scrubbers	Bristle brushes	Burnable waste
		Stainless steel	Recyclables (metal)
	Seals (Inkan, plastic)	Plastic waste (other)	* Wooden items are burnable waste. Others are landfill waste.
	Seashells	Burnable waste	
	Seaweed containers / Candy containers	Recyclables (metal)	Do not put large items in the empty can container.
	Senior walkers	Recyclables (metal)	Dispose of seats and bags as landfill waste.
	Sewing machines	Non-burnable waste (small household appliances)	* Bring large items such as foot-operated machines to the waste incineration plant yourself.
	Shampoo containers	Plastic waste (containers and packaging)	Use up all contents. Remove the top.
	Sheets	Recyclables (fabrics)	Place in a plastic bag with clothing. Boa sheets are non-burnable waste (crushable waste). Do not put it out on rainy days or else cover it with a plastic bag.
	Shinto altars	Burnable waste	Disassemble and put out as individual boards.
	Shoes	Recyclables (shoes)	Extremely dirty shoes, or only one of a pair, are non-burnable waste (landfill).
	Shovels	Recyclables (metal)	Remove any soil and lightly wash. No problem if there is rust.
	Sinks / Washstands	[Must Not Be Disposed of with Other Trash/Recycling]	Request the services of a specialist.
	Skateboards	Non-burnable waste (crushable waste)	
	Ski boots / Ice skates	Non-burnable waste (landfill waste)	
	Skis/Snowboards	Non-burnable waste (crushable waste)	* Remove boot bindings and dispose of them as recyclables (metal).
	Sleds (toy for children)	Plastic waste (other)	
	Sleeping bags	Non-burnable waste (crushable waste)	Put out zipped up.
	Sliding doors / Window screens (Fusuma, Shoji)	[Must Not Be Disposed of with Other Trash/Recycling]	
	Slime (toy)	Burnable waste	

Order	Items		Classification/Sorting	Disposal tips
S▼	Slippers	Fabrics	Non-burnable waste (landfill waste)	
		Plastic	Plastic waste (other)	
	Sneakers		Recyclables (clothing/shoes)	Extremely dirty shoes, or only one of a pair, are non-burnable waste (landfill).
	Socks	Clean items	Recyclables (clothing)	Pairs, without tears (* Pantyhose is landfill waste). Do not put it out on rainy days or else cover it with a plastic bag.
		Soiled items	Burnable waste	
	Sofas		Non-burnable waste (crushable waste)	* If the length, width, or height is more than 50 cm, you must bring it to the waste incineration plant yourself.
	Soil		[Must Not Be Disposed of with Other Trash/Recycling]	Request the services of a specialist.
	Solar water heaters		[Must Not Be Disposed of with Other Trash/Recycling]	Request the services of a specialist.
	Sponges		Plastic waste (other)	Items soiled from the kitchen, car waxing, etc. are landfill waste.
	Spoons	Metals	Recyclables (metal)	
		Plastic	Plastic waste (other)	
	Spray cans		Recyclables (metal)	Use the contents completely. If there is anything still inside, bring it to the waste incineration plant (2-3 cans).
	Sprayers		Recyclables (metal)	* Dispose of plastic items with plastic waste (other).
	Staplers		Recyclables (metal)	
	Staples		Recyclables (metal)	
	Stationery		Burnable waste	Sort according to material and put out.
			Plastic waste (other)	
			Non-burnable waste (landfill waste)	
	Steel pipes		Recyclables (metal)	Items for home use that are up to 2 m long.
	Steel plates / Steel bars		Recyclables (metal)	Up to 10 kg. Bring heavier items to the waste incineration plant yourself.
	Stepladders		Recyclables (metal)	
	Stereos / Components		Non-burnable waste (small household appliances)	Only the main units. * Disassemble wooden speakers and dispose of materials separately.
	Stockings		Non-burnable waste (landfill waste)	
	Stone(s)		[Must Not Be Disposed of with Other Trash/Recycling] (see p.18)	Request the services of a specialist.
	Storage sheds (steel)		Recyclables (metal)	Dismantle and bring to the waste incineration plant as recyclables (metals). (Items for home use only)
	Storage trays / Fish transport boxes		Plastic waste (containers and packaging)	For Styrofoam items. * Also, wash old items used for gardening and similar purposes.
	Stoves and heaters with fans		Non-burnable waste (small household appliances)	Empty any fuel from the bottom of the fuel tank.
	Straws		Plastic waste (other)	
	Strollers		Non-burnable waste (landfill waste)	
	Stuffed toys		Non-burnable waste (crushable waste)	
	Styrofoam		Plastic waste (containers and packaging)	Lightly wash.
	Sudare (bamboo blinds) / Yoshizu (reed screens)		Burnable waste	Cut into lengths of 50 cm or less, roll up and tie.
	Suitcases		Non-burnable waste (crushable waste)	
	Superballs		Non-burnable waste (landfill waste)	Dispose of rubber products as landfill waste.
	Supermarket bags (grocery bags)		Plastic waste (containers and packaging)	
	Surfboards		Non-burnable waste (crushable waste)	Cut into lengths of 50 cm or less and put out. You can also bring them to the waste incineration plant yourself.
	Swimwear		Recyclables (clothing)	Do not put it out on rainy days or else cover it with a plastic bag.
T▼	Tablet devices		Non-burnable waste (small household appliances)	
	Tambourines		Non-burnable waste (landfill waste)	
	Tarps (plastic)		Plastic waste (other)	* Waterproof fabric vehicle covers are non-burnable waste (crushable waste).
	Tatami mats		[Must Not Be Disposed of with Other Trash/Recycling] (see p.18)	Request the services of a tatami store.
	Telephones		Non-burnable waste (small household appliances)	
	Tennis rackets (wood, carbon, etc.)		Burnable waste	* Remove strings and dispose of metal items with recyclables (metal).
	Tent (leisure use)		Non-burnable waste (crushable waste)	Put out plastic with plastic waste (other). Poles are recyclables.
	Tents (event use)	Tarps	Non-burnable waste (crushable waste)	Check to see what to do with large amounts. Request disposal services when replacing.
		Tent legs	Recyclables (metal)	
	The weight for pickling		Non-burnable waste (landfill waste)	
	Thermal paper		Burnable waste	* Cannot be disposed of with recyclables.
	Thermometers		Non-burnable waste (landfill waste)	* Items that can be disassembled, such as those with wooden and plastic frames, should be separated by material.
	Thermometers (mercury / digital)		PET plastic bottles, hazardous waste	Place in the provided containers. Digital thermometers are non-burnable waste (small household appliances).
	Thumbtacks		Recyclables (metal)	Put in a can with a lid and dispose with nails, screws, etc.
	Tiles		Non-burnable waste (landfill waste)	* Items generated by construction [Must Not Be Disposed of with Other Trash/Recycling.]
	Tires		[Must Not Be Disposed of with Other Trash/Recycling] (see p.18)	Request the services of a specialist.
	Tissue paper boxes		Recyclables (waste paper)	Remove plastic and tie with string along with magazines.
	Toaster ovens / Convection microwaves		Non-burnable waste (small household appliances)	
	Toasters		Non-burnable waste (small household appliances)	
	Toilet seats		Non-burnable waste (landfill waste)	
	Tongs (cooking utensils)		Recyclables (metal)	
	Tool box (elementary school students)		Recyclables (waste paper) Plastic waste (other)	Sort according to material and put out.
	Tools		Recyclables (metal)	Remove handles of tools such as hatchets and saws when possible.

Order	Items	Classification/Sorting	Disposal tips
T▼	Toothbrushes	Burnable waste	Sanitary products.
	Toothpaste tubes (plastic)	Plastic waste (containers and packaging)	Use up all contents. Remove the top.
	Towels	Recyclables (fabrics)	Tie in bundles with string. Do not put it out on rainy days or else cover it with a plastic bag.
	Toy metal cars	Recyclables (metal)	
	Toys	Metals	Recyclables (metal)
		Plastic/Metals	Non-burnable waste (landfill waste)
		Plastic	Plastic waste (other)
	Trays	Plastic waste (containers and packaging)	Remove batteries.
	Trays (Obon)	Made of wood	Wash before disposal.
		Metals	Burnable waste
		Plastic	Recyclables (metal)
	Treadmills	Plastic waste (other)	
	Tricycles (metal)	Non-burnable waste (small household appliances)	* Items larger than 50 cm must be brought to the waste incineration plant yourself. Only for items used at home. Remove everything but the metal parts.
	Trophies	Metals	Recyclables (metal)
		Plastic	Plastic waste (other)
	Tube-shaped containers	Recyclables (metal)	Dispose of parts such as wooden bases made of other materials separately.
	TV cables	Plastic waste (other)	Dispose of parts such as wooden bases made of other materials separately.
	TV games	Plastic waste (containers and packaging)	Use up all toothpaste, wasabi, or other contents.
U▼	Umbrellas / Parasols	Umbrella frames	Non-burnable waste (small household appliances)
		Umbrella cloths	Dispose of game cartridges as non-burnable waste (landfill).
	USB devices	Non-burnable waste (small household appliances)	
	Used tea leaves	Non-burnable waste (small household appliances)	
V▼	Vacuum cleaners	Burnable waste	Drain well before disposal.
	Vacuum-packed food packs	Non-burnable waste (small household appliances)	* Only the main unit. Hoses and nozzles are plastic waste (other). Batteries are hazardous waste.
	Vases (glass/ceramic)	Plastic waste (containers and packaging)	Use all contents, rinse inside, and dispose.
	Ventilation fan filters	Non-burnable waste (landfill waste)	
	Ventilation fans	Non-burnable waste (landfill waste)	
	Video cameras	Non-burnable waste (small household appliances)	* Dispose of plastic blades with plastic waste (other).
	Video decks	Non-burnable waste (small household appliances)	
	Videotapes	Non-burnable waste (small household appliances)	
W▼	Washbasins	Non-burnable waste (landfill waste)	Put out cases with plastic waste (other).
	Washing machines	Plastic waste (other)	
	Waste oil	[Must Not Be Disposed of with Other Trash/Recycling] (see p.18)	[Must Not Be Disposed of with Other Trash/Recycling] (as per The Home Appliance Recycling Law (see p.16))
	Water heaters	[Must Not Be Disposed of with Other Trash/Recycling]	Request the services of a specialist.
	Water pillow	[Must Not Be Disposed of with Other Trash/Recycling]	* Request the services of a building contractor.
	Water tanks	Non-burnable waste (landfill waste)	
		Plastic	Plastic waste (other)
	Wheelbarrows (metal)	Glass	Non-burnable waste (landfill waste)
		Plastic	Plastic waste (other)
	Wheels (for vehicles)	Recyclables (metal)	Only for items that are completely plastic. * Items with metal frames are landfill waste.
	Whiteboards (wood, plastic)	Non-burnable waste (landfill waste)	Broken items are dangerous, so dispose of the whole.
	Wind chimes (Furin)	Recyclables (metal)	* Remove tires, and put them out as landfill waste.
	Wires (various)	Non-burnable waste (crushable waste)	Request the services of a specialist. Same for tires.
	Wooden temple drums (Mokugyo)	Non-burnable waste (landfill waste)	
	Word processors	Non-burnable waste (small household appliances)	Remove any detachable plastic or paper.
	Work gloves	Recyclables (metal)	Roll up and tie to prevent tangling.
	Woven mats (Goza)	Non-burnable waste (small household appliances)	Cut large items into smaller pieces.
		Rush / Tatami covering	
	Wraps	Plastic bags	Burnable waste
		The core of plastic wrap	Plastic waste (other)
	Wristwatches	Plastic waste (containers and packaging)	Rinse and dispose. The core of plastic wrap goes out with recyclables.
	Writing mat	Recyclables (waste paper)	Dispose of it as miscellaneous paper.
Y▼	Yarn	Non-burnable waste (small household appliances)	
	Yoga mats	Plastic waste (other)	
		Rubber	Non-burnable waste (landfill waste)

- Clothing or bedding contaminated with vomit from someone suffering from a contagious disease: bring directly to the waste incineration plant. (Burnable waste)
- As items attached to residences are considered construction waste (industrial waste), request the services of a specialist regardless of the amount.
- Generally, for chemicals and other items that cannot be disposed of as household waste, you must request the services of a specialist. Do not dispose of town-collected waste at your own discretion.

[Nagaizumi Town Official YouTube Video]



Re-Style CM Contest entry
Nagaizumi Town "Life on Paper"



First Re-Style CM Contest
Regional Work Award! "This Is Why We Eat Every Bite." Nagaizumi Town



Nature Is Watching. Illegal Dumping Is a Crime.
Nagaizumi Town Official Video



"A Helping Hand" Edition
"An Aluminum Can's Recycling Journey"



Inquiries

Department of Living Environment TEL: 055-989-5514, FAX: 055-986-5905
828 Nakatogari, Nagaizumi Town 411-0942

Waste Incineration Plant TEL: 055-986-8393, FAX: 055-988-8432
143-11 Higashino, Nagaizumi Town 411-0931

ちょうどいいが いちばんいい *nagaizumi*